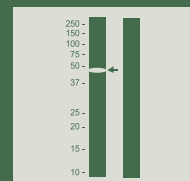


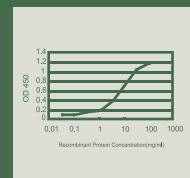
Fluorescence *In Situ* Hybridization (FISH)



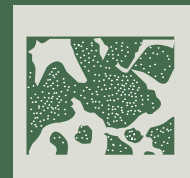
Western Blot



Sandwich ELISA



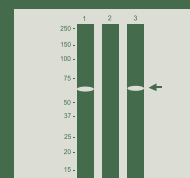
Immunohistochemistry



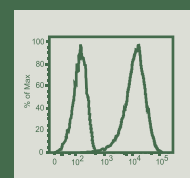
Immunofluorescence



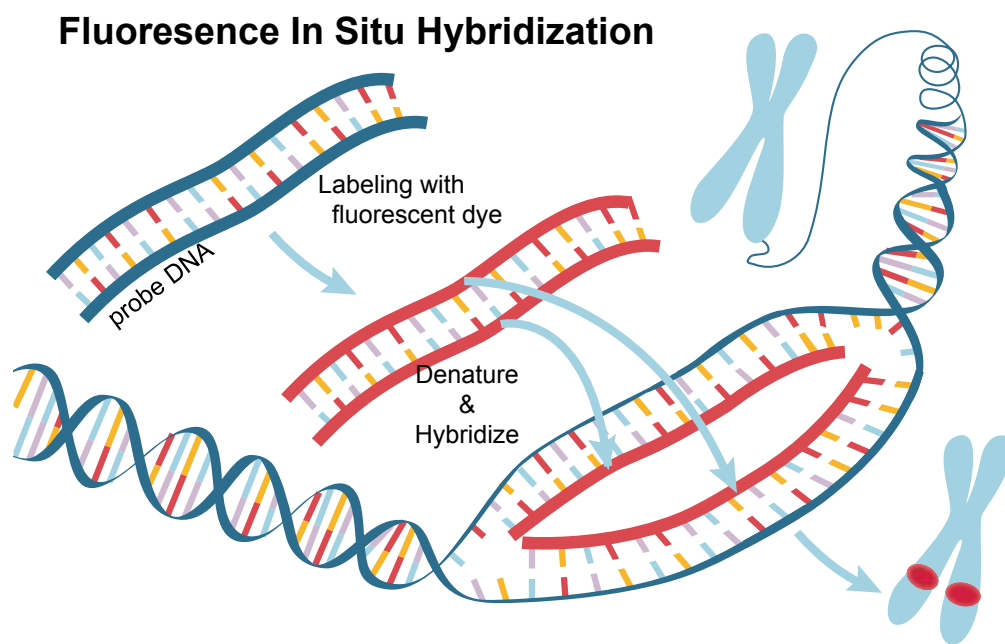
Immunoprecipitation



Flow Cytometry



Introduction	1
Gene FISH Probes	4
Split FISH Probes	10
Translocation FISH Probes	11
Accessory Kits & Reagents	12



Abnova Corporation

www.abnova.com

Email: sales@abnova.com

Address: 9F, No. 108, Jhouzih St., Neihu, Taipei 114, Taiwan

Tel: + 886 2 8751 1888 Fax: + 886 2 6602 1218

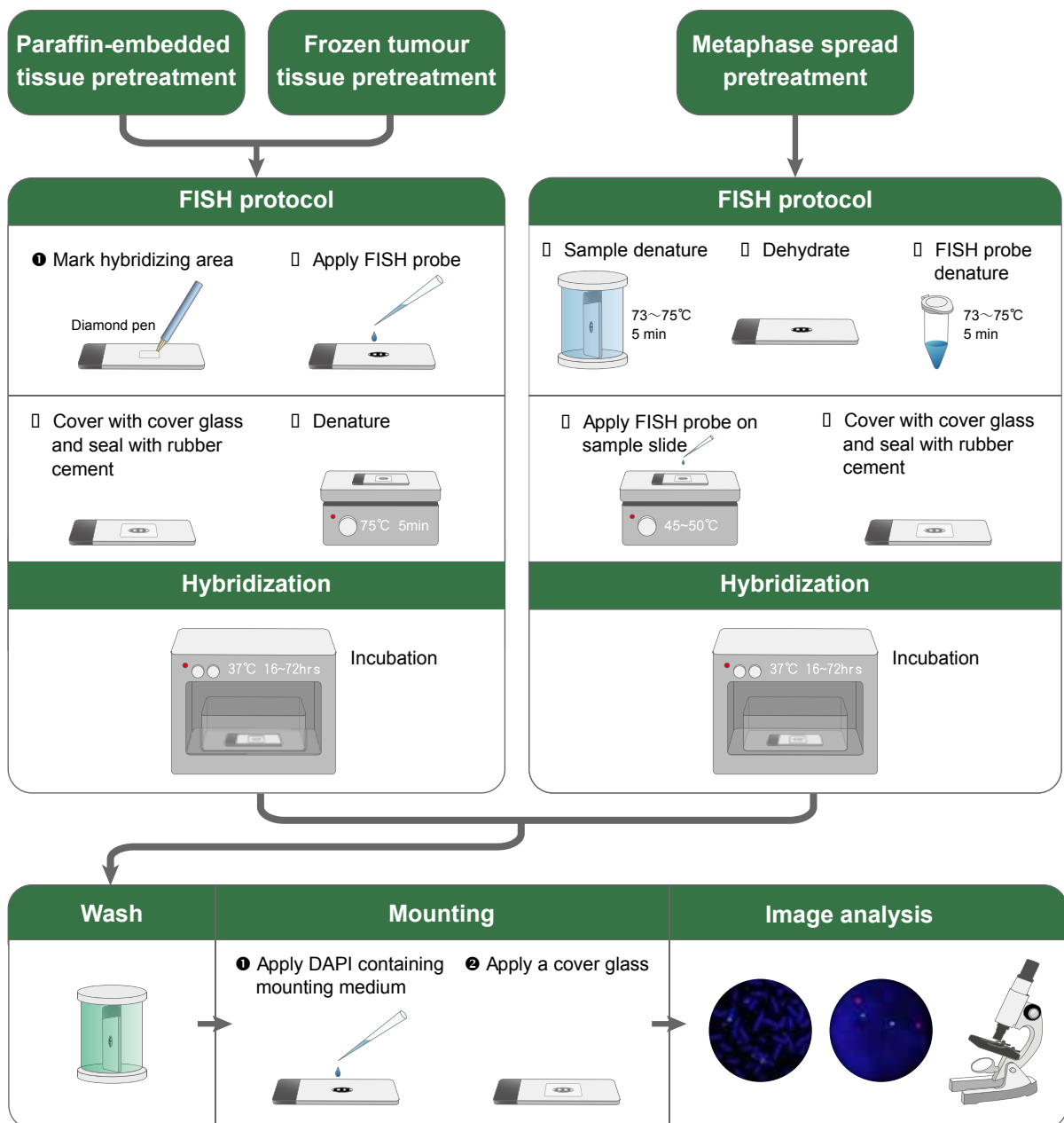
Fluorescence In Situ Hybridization (FISH)

FISH is a technique used to identify and localize the presence or absence of specific DNA sequences on cells and tissues. Abnova has developed a range of FISH probes for the detection of gene amplification, loss, and translocation. Each FISH probe product has a pair of locus-specific, fluorophore-labeled probes originated from a bacterial artificial chromosome (BAC) library. We continue to expand the scope of the FISH probes to meet customers' research needs. Custom probes are also available upon request.

Advantages

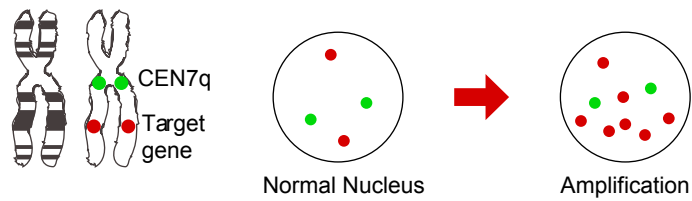
- Dual colored probes for fast, sensitive, and specific detection
- Work on metaphase spread, paraffin embedded and frozen tissue
- Identify gene amplification, loss, and translocation
- High signal-to-noise ratio
- Low cross-reactivity

Procedure

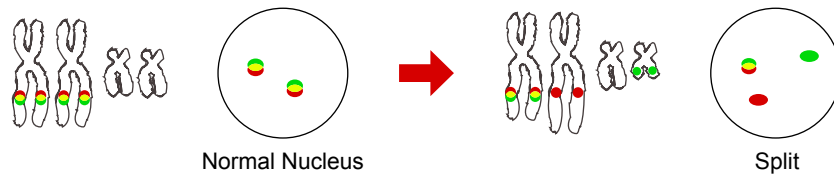


Product Lines

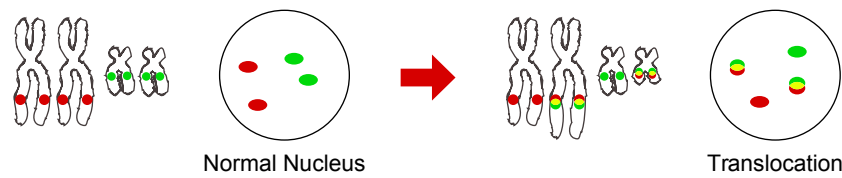
Gene Amplification / Gene Loss



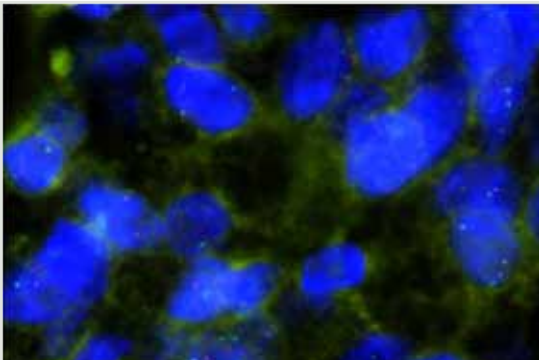
Split Dual Color FISH Probe



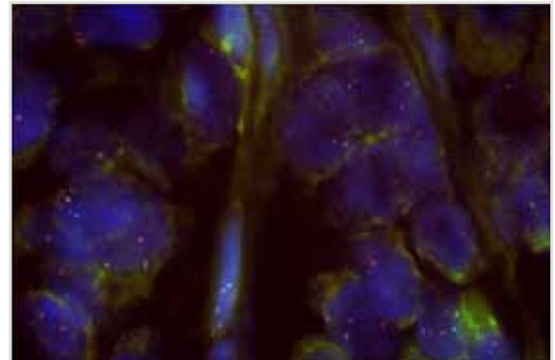
Translocation Dual Color FISH Probe



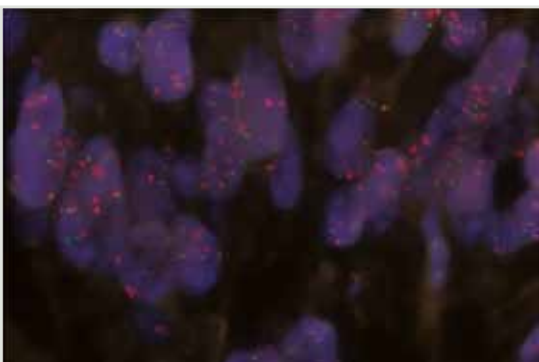
Hot Products



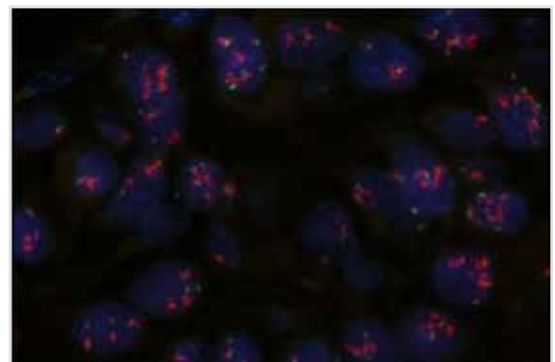
FG0014
AKT2/CEN19p FISH Probe



FG0010
CCND1/CEN11p FISH Probe

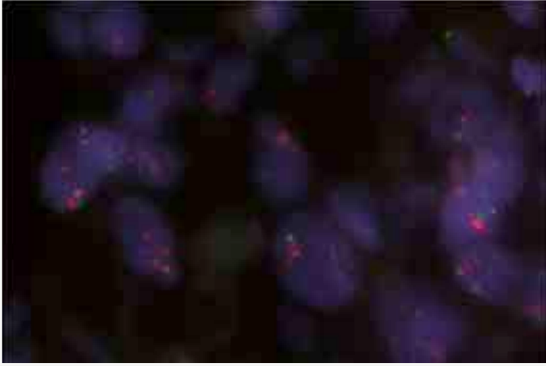


FG0004
c-met/CEN7q FISH Probe

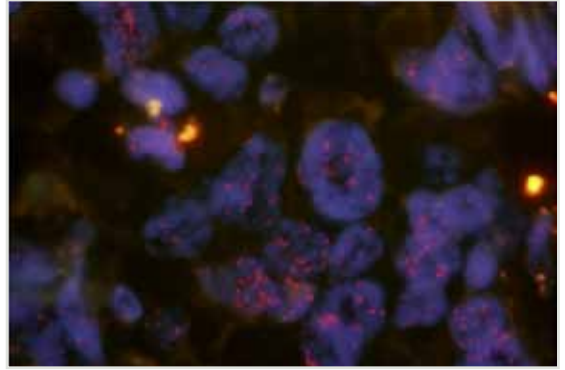


FG0005
EGFR/CEN7q FISH Probe

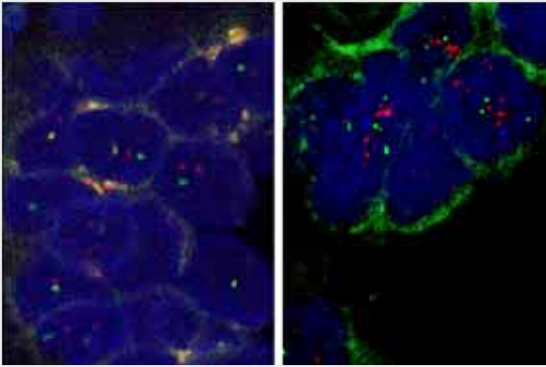
Hot Products



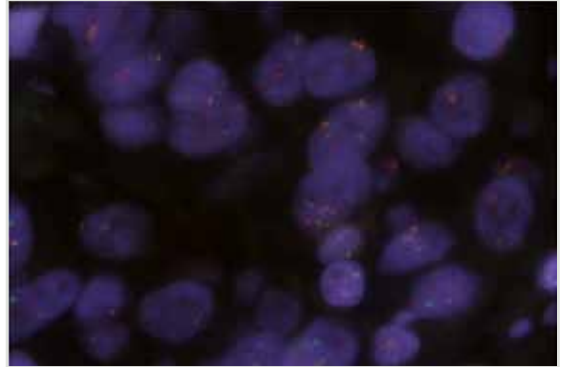
FG0001
FGF23/CEN12p FISH Probe



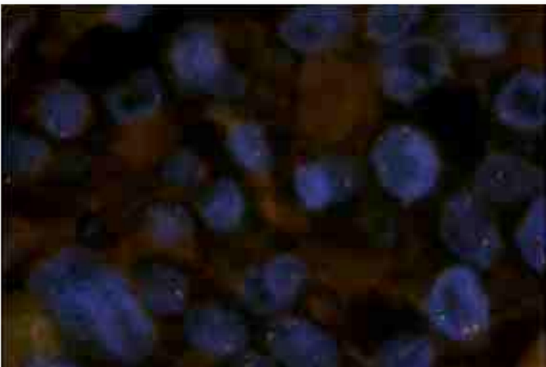
FG0018
FGFR2/CEN10p FISH Probe



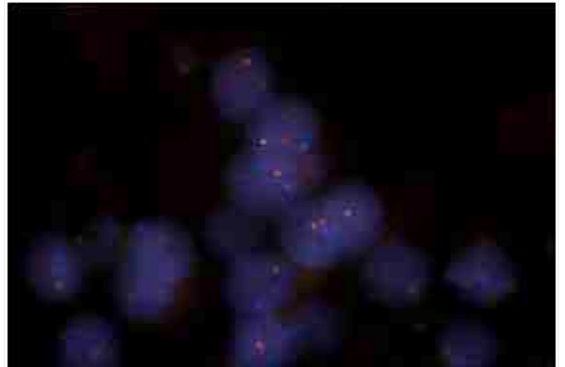
FG0006
HER2/CEN17q FISH Probe



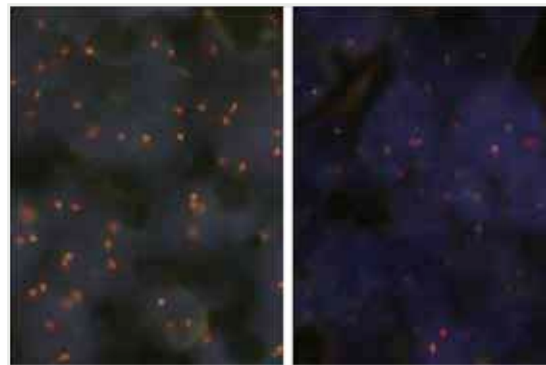
FG0017
KRAS/CEN12q FISH Probe



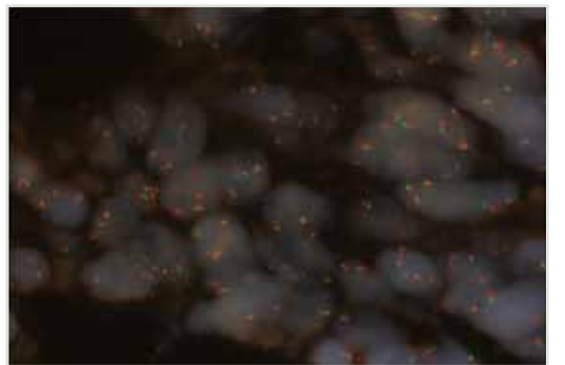
FS0001
ALK Split FISH Probe



FS0008
ERG Split FISH Probe



FS0002
SYT Split FISH Probe

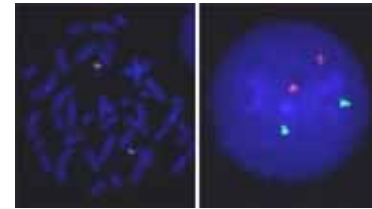


FT0001
EML4/ALK DY Translocation FISH Probe

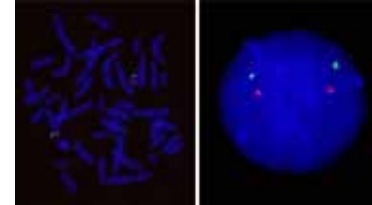
Gene FISH Probes

Product Information

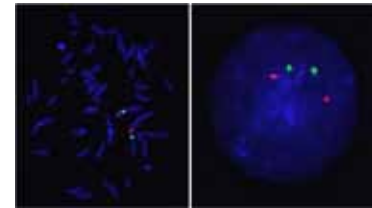
Cat.Num	FG0034			
Product Name	AIB1/CEN20q FISH Probe			
	Probe Name	Size	Fluorophore	Location
Probe 1	AIB1	Approximately 350kb	Texas Red	20q12
Probe 2	CEN20q	Approximately 680kb	FITC	20q11.22
Probe Gap	The gap between two probes is approximately 9,300 kb.			



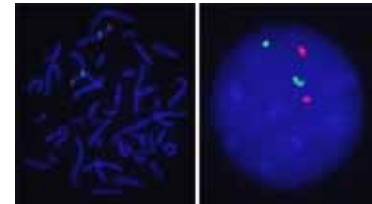
Cat.Num	FG0014			
Product Name	AKT2/CEN19p FISH Probe			
	Probe Name	Size	Fluorophore	Location
Probe 1	AKT2	Approximately 160kb	Texas Red	19q13.13
Probe 2	CEN19p	Approximately 570kb	FITC	19p13.11
Probe Gap	The gap between two probes is approximately 17,800 kb.			



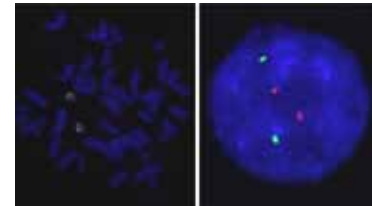
Cat.Num	FG0036			
Product Name	ALK/CEN2p FISH Probe			
	Probe Name	Size	Fluorophore	Location
Probe 1	ALK	Approximately 540kb	Texas Red	2p23
Probe 2	CEN2p	Approximately 670kb	FITC	2p11.2
Probe Gap	The gap between two probes is approximately 55,300 kb.			



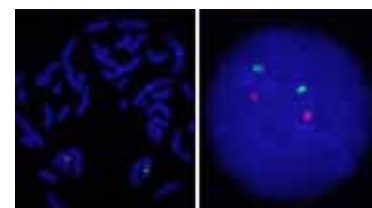
Cat.Num	FG0021			
Product Name	APC/CEN5q FISH Probe			
	Probe Name	Size	Fluorophore	Location
Probe 1	APC	Approximately 420kb	Texas Red	5q22.2
Probe 2	CEN5q	Approximately 700kb	FITC	5q11.2
Probe Gap	The gap between two probes is approximately 59,200 kb.			



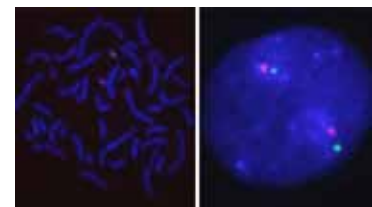
Cat.Num	FG0030			
Product Name	CALR/CEN19q FISH Probe			
	Probe Name	Size	Fluorophore	Location
Probe 1	CALR	Approximately 260kb	Texas Red	19p13.1-13.2
Probe 2	CEN19q	Approximately 400kb	FITC	19q12
Probe Gap	The gap between two probes is approximately 17,100 kb.			



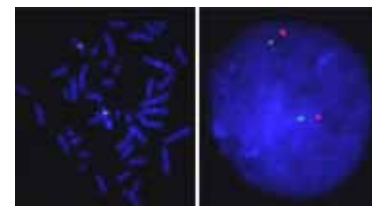
Cat.Num	FG0010			
Product Name	CCND1/CEN11p FISH Probe			
	Probe Name	Size	Fluorophore	Location
Probe 1	CCND1	Approximately 400kb	Texas Red	11q13
Probe 2	CEN11p	Approximately 630kb	FITC	11p11.12
Probe Gap	The gap between two probes is approximately 21,600 kb.			



Cat.Num	FG0013			
Product Name	CCNE1/CEN19p FISH Probe			
	Probe Name	Size	Fluorophore	Location
Probe 1	CCNE1	Approximately 150kb	Texas Red	19q12
Probe 2	CEN19p	Approximately 570kb	FITC	19p13.11
Probe Gap	The gap between two probes is approximately 7,350 kb.			



Cat.Num	FG0033			
Product Name	CDK4/CEN12q FISH Probe			
	Probe Name	Size	Fluorophore	Location
Probe 1	CDK4	Approximately 350kb	Texas Red	12q14.1
Probe 2	CEN12q	Approximately 580kb	FITC	12q12
Probe Gap	The gap between two probes is approximately 13,900 kb.			



Gene FISH Probes

Product Information

Cat.Num FG0032
Product Name CHGA-ITPK1/CEN14q FISH Probe

	Probe Name	Size	Fluorophore	Location
Probe 1	CHGA-ITPK1	Approximately 270kb	Texas Red	14q32
Probe 2	CEN14q	Approximately 400kb	FITC	14q11.2
Probe Gap	The gap between two probes is approximately 59,900 kb.			

Cat.Num FG0004
Product Name c-met/CEN7q FISH Probe

	Probe Name	Size	Fluorophore	Location
Probe 1	c-met	Approximately 270kb	Texas Red	7q31
Probe 2	CEN7q	Approximately 820kb	FITC	7q11.21
Probe Gap	The gap between two probes is approximately 51,200 kb.			

Cat.Num FG0009
Product Name c-myc/CEN8p FISH Probe

	Probe Name	Size	Fluorophore	Location
Probe 1	c-myc	Approximately 240kb	Texas Red	8q24.12-q24.13
Probe 2	CEN8p	Approximately 520kb	FITC	8p11.21
Probe Gap	The gap between two probes is approximately 88,100 kb.			

Cat.Num FG0008
Product Name CX43/CEN6 FISH Probe

	Probe Name	Size	Fluorophore	Location
Probe 1	CX43	Approximately 150kb	Texas Red	6q21-q23.2
Probe 2	CEN6p	Approximately 660kb	FITC	6p12.1
Probe Gap	The gap between two probes is approximately 66,600 kb.			

Cat.Num FG0043
Product Name CXCL1/CEN4q FISH Probe

	Probe Name	Size	Fluorophore	Location
Probe 1	CXCL1	Approximately 350kb	Texas Red	4q21
Probe 2	CEN4q	Approximately 650kb	FITC	4q12
Probe Gap	The gap between two probes is approximately 16,100 kb.			

Cat.Num FG0045
Product Name DTNB/CEN2p FISH Probe

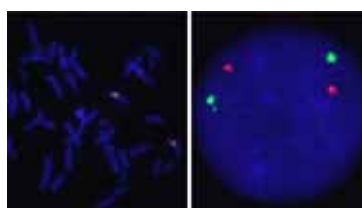
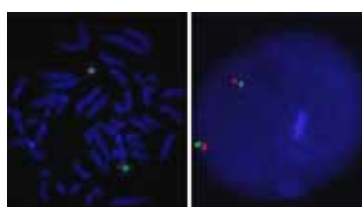
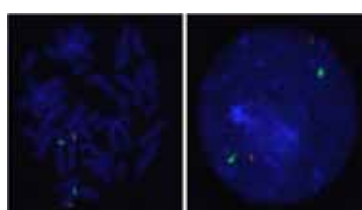
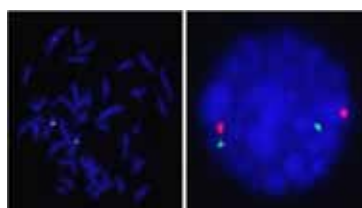
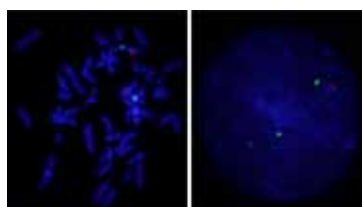
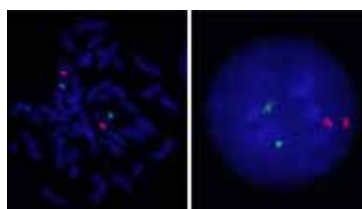
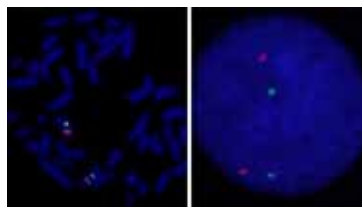
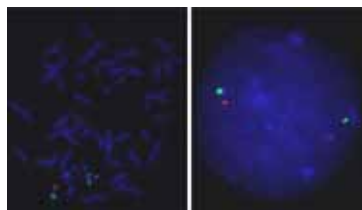
	Probe Name	Size	Fluorophore	Location
Probe 1	DTNB	Approximately 380kb	Texas Red	2p24
Probe 2	CEN2p	Approximately 670kb	FITC	2p11.2
Probe Gap	The gap between two probes is approximately 59,300 kb.			

Cat.Num FG0015
Product Name DYRK1A/CEN21q FISH Probe

	Probe Name	Size	Fluorophore	Location
Probe 1	DYRK1A	Approximately 570kb	Texas Red	21q22.13
Probe 2	CEN21q	Approximately 520kb	FITC	21q11.2
Probe Gap	The gap between two probes is approximately 14,000 kb.			

Cat.Num FG0005
Product Name EGFR/CEN7q FISH Probe

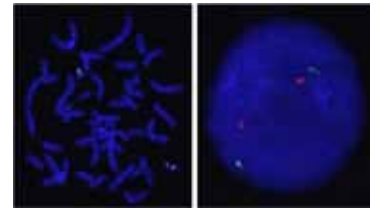
	Probe Name	Size	Fluorophore	Location
Probe 1	EGFR	Approximately 300kb	Texas Red	7p12
Probe 2	CEN7q	Approximately 820kb	FITC	7q11.21
Probe Gap	The gap between two probes is approximately 8,900 kb.			



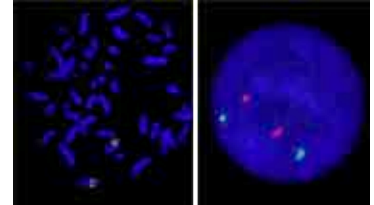
Gene FISH Probes

Product Information

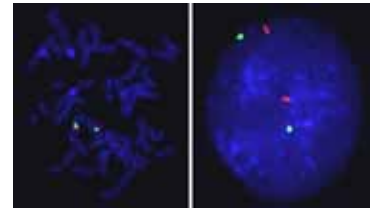
Cat.Num	FG0037			
Product Name	ERCC1/CEN19p FISH Probe			
	Probe Name	Size	Fluorophore	Location
Probe 1	ERCC1	Approximately 320kb	Texas Red	19q13.32
Probe 2	CEN19p	Approximately 570kb	FITC	19p13.11
Probe Gap	The gap between two probes is approximately 22,900 kb			



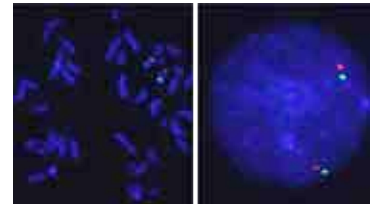
Cat.Num	FG0001			
Product Name	FGF23/CEN12p FISH Probe			
	Probe Name	Size	Fluorophore	Location
Probe 1	FGF23	Approximately 300kb	Texas Red	12p13
Probe 2	CEN12p	Approximately 530kb	FITC	12p11.22
Probe Gap	The gap between two probes is approximately 25,100 kb.			



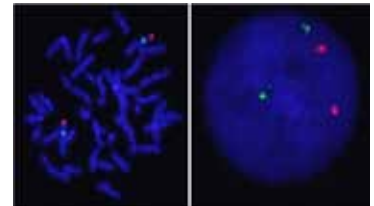
Cat.Num	FG0049			
Product Name	FGFR1/CEN8q FISH Probe			
	Probe Name	Size	Fluorophore	Location
Probe 1	FGFR1	Approximately 320kb	Texas Red	8p12
Probe 2	CEN8q	Approximately 520kb	FITC	8q11.21
Probe Gap	The gap between two probes is approximately 11,000 kb			



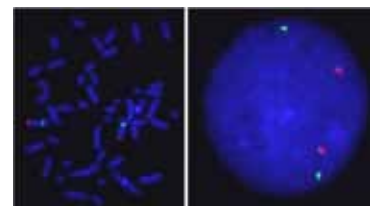
Cat.Num	FG0018			
Product Name	FGFR2/CEN10p FISH Probe			
	Probe Name	Size	Fluorophore	Location
Probe 1	FGFR2	Approximately 330kb	Texas Red	10q26
Probe 2	CEN10p	Approximately 640kb	FITC	10p11.22
Probe Gap	The gap between two probes is approximately 91,200 kb.			



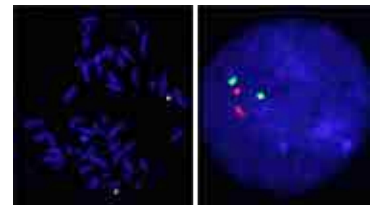
Cat.Num	FG0050			
Product Name	FGFR3/CEN4p FISH Probe			
	Probe Name	Size	Fluorophore	Location
Probe 1	FGFR3	Approximately 400kb	Texas Red	4p16.3
Probe 2	CEN4q	Approximately 650kb	FITC	4q13
Probe Gap	The gap between two probes is approximately 55,800 kb			



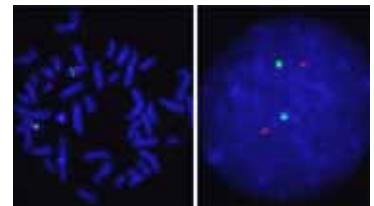
Cat.Num	FG0051			
Product Name	FGFR4/CEN5q FISH Probe			
	Probe Name	Size	Fluorophore	Location
Probe 1	FGFR4	Approximately 450kb	Texas Red	5q35.1
Probe 2	CEN5q	Approximately 700kb	FITC	5q11.2
Probe Gap	The gap between two probes is approximately 123,600 kb			



Cat.Num	FG0006			
Product Name	HER2/CEN17q FISH Probe			
	Probe Name	Size	Fluorophore	Location
Probe 1	HER2	Approximately 220kb	Texas Red	17q21.1
Probe 2	CEN17q	Approximately 540kb	FITC	17q11.2
Probe Gap	The gap between two probes is approximately 5,700 kb.			

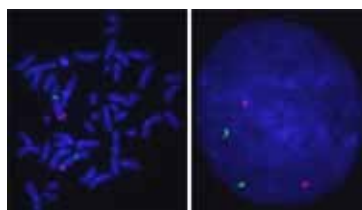


Cat.Num	FG0023			
Product Name	HER3/CEN12p FISH Probe			
	Probe Name	Size	Fluorophore	Location
Probe 1	HER3	Approximately 320kb	Texas Red	12q13
Probe 2	CEN12p	Approximately 530kb	FITC	12p11.22
Probe Gap	The gap between two probes is approximately 36,000 kb.			

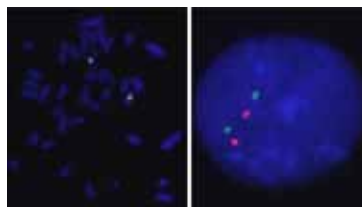


Gene FISH Probes

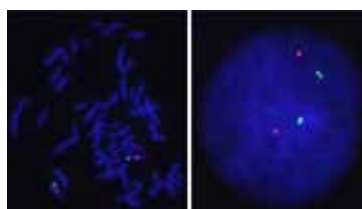
Product Information



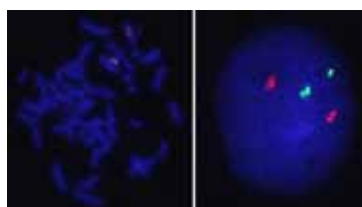
Cat.Num	FG0024			
Product Name	HER4/CEN2p FISH Probe			
	Probe Name	Size	Fluorophore	Location
Probe 1	HER4	Approximately 360kb	Texas Red	2q33-q34
Probe 2	CEN2p	Approximately 670kb	FITC	2p11.2
Probe Gap	The gap between two probes is approximately 126,300 kb.			



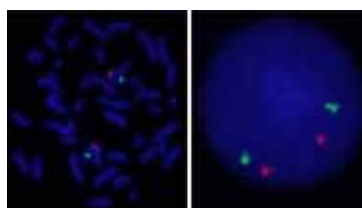
Cat.Num	FG0017			
Product Name	KRAS/CEN12q FISH Probe			
	Probe Name	Size	Fluorophore	Location
Probe 1	KRAS	Approximately 250kb	Texas Red	12p12
Probe 2	CEN12q	Approximately 580kb	FITC	12q12
Probe Gap	The gap between two probes is approximately 17,900 kb.			



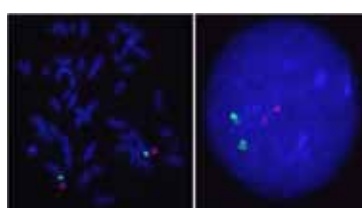
Cat.Num	FG0020			
Product Name	MDM2/CEN12p FISH Probe			
	Probe Name	Size	Fluorophore	Location
Probe 1	MDM2	Approximately 270kb	Texas Red	12q14.3-q15
Probe 2	CEN12p	Approximately 530kb	FITC	12p11.22
Probe Gap	The gap between two probes is approximately 38,700 kb.			



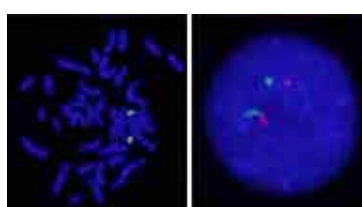
Cat.Num	FG0040			
Product Name	MEN1/CEN11p FISH Probe			
	Probe Name	Size	Fluorophore	Location
Probe 1	MEN1	Approximately 500kb	Texas Red	11q13
Probe 2	CEN11p	Approximately 630kb	FITC	11p11.12
Probe Gap	The gap between two probes is approximately 16,700 kb.			



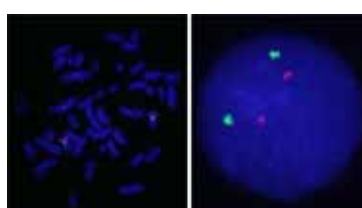
Cat.Num	FG0016			
Product Name	MLL/CEN11p FISH Probe			
	Probe Name	Size	Fluorophore	Location
Probe 1	MLL	Approximately 380kb	Texas Red	11q23.3
Probe 2	CEN11p	Approximately 630kb	FITC	11p11.12
Probe Gap	The gap between two probes is approximately 70,500 kb.			



Cat.Num	FG0048			
Product Name	MYCN/CEN2p FISH Probe			
	Probe Name	Size	Fluorophore	Location
Probe 1	MYCN	Approximately 270kb	Texas Red	2p24.1
Probe 2	CEN2p	Approximately 670kb	FITC	2p11.2
Probe Gap	The gap between two probes is approximately 69,000 kb.			



Cat.Num	FG0003			
Product Name	NF2/CEN22q FISH Probe			
	Probe Name	Size	Fluorophore	Location
Probe 1	NF2	Approximately 300kb	Texas Red	22q12.2
Probe 2	CEN22q	Approximately 620kb	FITC	22q11.22
Probe Gap	The gap between two probes is approximately 4,000 kb.			

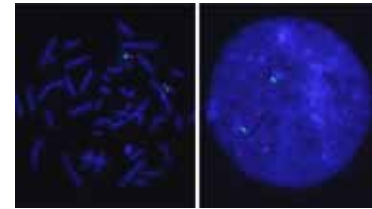


Cat.Num	FG0002			
Product Name	p16/CEN9q FISH Probe			
	Probe Name	Size	Fluorophore	Location
Probe 1	p16	Approximately 110kb	Texas Red	9p21
Probe 2	CEN9q	Approximately 470kb	FITC	9q21
Probe Gap	The gap between two probes is approximately 49,380 kb.			

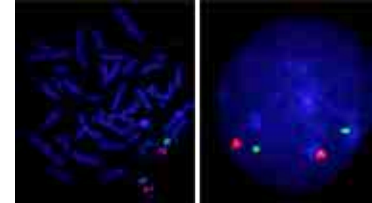
Gene FISH Probes

Product Information

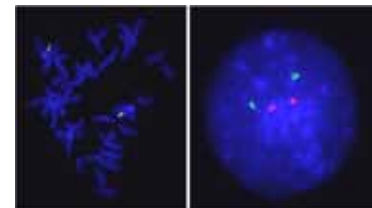
Cat.Num	FG0011			
Product Name	p53/CEN17q FISH Probe			
	Probe Name	Size	Fluorophore	Location
Probe 1	p53	Approximately 190kb	Texas Red	17p13.1
Probe 2	CEN17q	Approximately 540kb	FITC	17q11.2
Probe Gap	The gap between two probes is approximately 24,700 kb.			



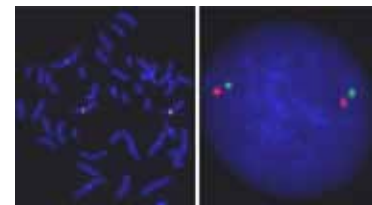
Cat.Num	FG0019			
Product Name	PTEN/CEN10p FISH Probe			
	Probe Name	Size	Fluorophore	Location
Probe 1	PTEN	Approximately 470kb	Texas Red	10q23
Probe 2	CEN10p	Approximately 640kb	FITC	10p11.22
Probe Gap	The gap between two probes is approximately 57,500 kb.			



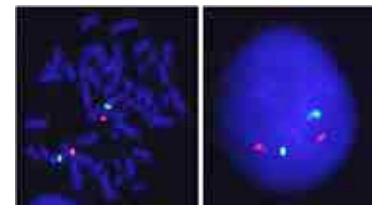
Cat.Num	FG0038			
Product Name	PTPRT/CEN20p FISH Probe			
	Probe Name	Size	Fluorophore	Location
Probe 1	PTPRT	Approximately 450kb	Texas Red	20q12-q13
Probe 2	CEN20q	Approximately 680kb	FITC	20q11.22
Probe Gap	The gap between two probes is approximately 4,200 kb.			



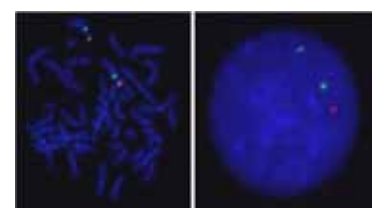
Cat.Num	FG0031			
Product Name	RUNX2/CEN6p FISH Probe			
	Probe Name	Size	Fluorophore	Location
Probe 1	RUNX2	Approximately 230kb	Texas Red	6p21
Probe 2	CEN6p	Approximately 660kb	FITC	6p12.1
Probe Gap	The gap between two probes is approximately 2,800 kb.			



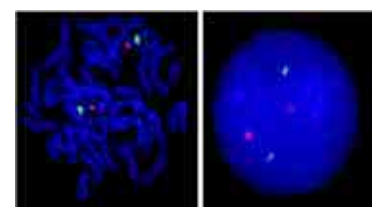
Cat.Num	FG0039			
Product Name	SDHB/CEN1p FISH Probe			
	Probe Name	Size	Fluorophore	Location
Probe 1	SDHB	Approximately 400kb	Texas Red	1p36.13
Probe 2	CEN1p	Approximately 780kb	FITC	1p13.3
Probe Gap	The gap between two probes is approximately 92,300 kb.			



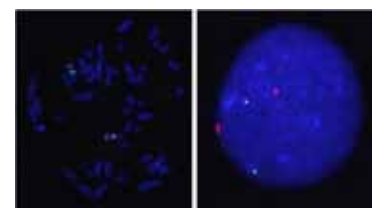
Cat.Num	FG0046			
Product Name	SERPINB6/CEN6p FISH Probe			
	Probe Name	Size	Fluorophore	Location
Probe 1	SERPINB6	Approximately 400kb	Texas Red	6p25
Probe 2	CEN6p	Approximately 660kb	FITC	6p12.1
Probe Gap	The gap between two probes is approximately 45,000 kb.			



Cat.Num	FG0047			
Product Name	SYT9/CEN11p FISH Probe			
	Probe Name	Size	Fluorophore	Location
Probe 1	SYT9	Approximately 400kb	Texas Red	11p15.4
Probe 2	CEN11p	Approximately 630kb	FITC	11p11.12
Probe Gap	The gap between two probes is approximately 39,400 kb.			



Cat.Num	FG0042			
Product Name	TNIK/CEN3q FISH Probe			
	Probe Name	Size	Fluorophore	Location
Probe 1	TNIK	Approximately 490kb	Texas Red	3q26.2-p26.31
Probe 2	CEN3q	Approximately 500kb	FITC	3q12.1
Probe Gap	The gap between two probes is approximately 74,800 kb.			



Gene FISH Probes

Product Information

Cat.Num FG0007
Product Name TOP2A/CEN17q FISH Probe

	Probe Name	Size	Fluorophore	Location
Probe 1	TOP2A	Approximately 180kb	Texas Red	17q21
Probe 2	CEN17q	Approximately 540kb	FITC	17q11.2
Probe Gap	The gap between two probes is approximately 6,400 kb.			

Cat.Num FG0044
Product Name TPM4/CEN19q FISH Probe

	Probe Name	Size	Fluorophore	Location
Probe 1	TPM4	Approximately 380kb	Texas Red	19p13.1
Probe 2	CEN19q	Approximately 400kb	FITC	19q12
Probe Gap	The gap between two probes is approximately 13,800 kb			

Cat.Num FG0041
Product Name TPX2/CEN20p FISH Probe

	Probe Name	Size	Fluorophore	Location
Probe 1	TPX2	Approximately 150kb	Texas Red	20q11.2
Probe 2	CEN20p	Approximately 400kb	FITC	20p11.21
Probe Gap	The gap between two probes is approximately 7,900 kb			

Cat.Num FG0026
Product Name TRF1/CEN8p FISH Probe

	Probe Name	Size	Fluorophore	Location
Probe 1	TRF1	Approximately 290kb	Texas Red	8q13
Probe 2	CEN8p	Approximately 520kb	FITC	8p11.21
Probe Gap	The gap between two probes is approximately 33,200 kb.			

Cat.Num FG0012
Product Name TYMS/CEN18q FISH Probe

	Probe Name	Size	Fluorophore	Location
Probe 1	TYMS	Approximately 180kb	Texas Red	18p11.32
Probe 2	CEN18q	Approximately 660kb	FITC	18q11.2
Probe Gap	The gap between two probes is approximately 29,300 kb.			

Cat.Num FG0025
Product Name UBE3A/CEN15q FISH Probe

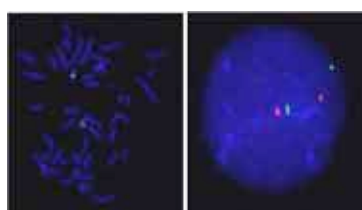
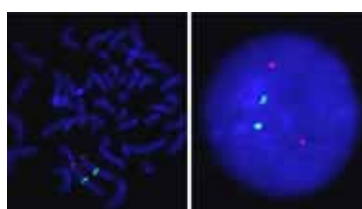
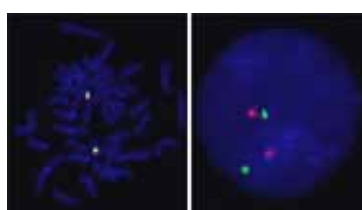
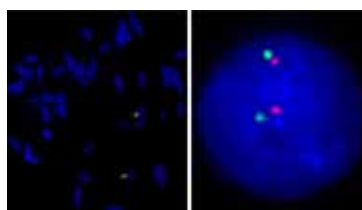
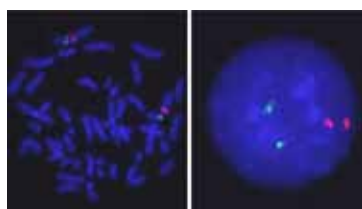
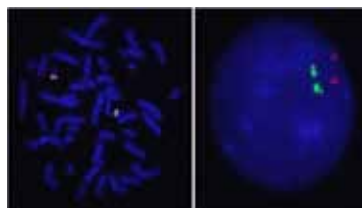
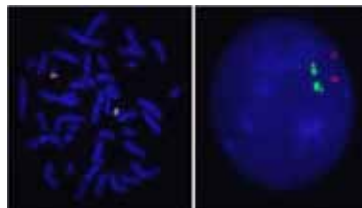
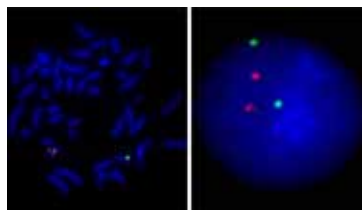
	Probe Name	Size	Fluorophore	Location
Probe 1	UBE3A	Approximately 370kb	Texas Red	15q11.2
Probe 2	CEN15q	Approximately 680kb	FITC	15q11.2
Probe Gap	The gap between two probes is approximately 5,700 kb.			

Cat.Num FG0029
Product Name VHL/CEN3q FISH Probe

	Probe Name	Size	Fluorophore	Location
Probe 1	VHL	Approximately 170kb	Texas Red	3p26-p25
Probe 2	CEN3q	Approximately 500kb	FITC	3q12.1
Probe Gap	The gap between two probes is approximately 85,100 kb.			

Cat.Num FG0035
Product Name YES1/CEN18q FISH Probe

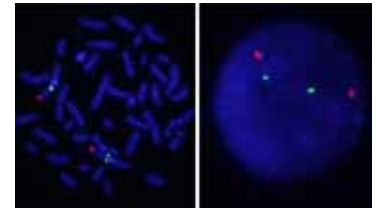
	Probe Name	Size	Fluorophore	Location
Probe 1	YES1	Approximately 150kb	Texas Red	18p11.32
Probe 2	CEN18q	Approximately 660kb	FITC	18q11.2
Probe Gap	The gap between two probes is approximately 29,200 kb			



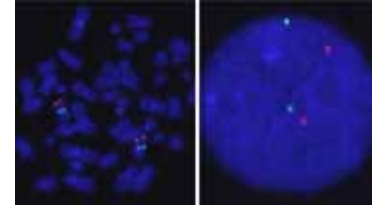
Gene FISH Probes

Product Information

Cat.Num	FG0027			
Product Name	1p36.33/CEN1p FISH Probe			
	Probe Name	Size	Fluorophore	Location
Probe 1	1p36.33	Approximately 600kb	Texas Red	1p36.33
Probe 2	CEN1p	Approximately 780kb	FITC	1p13.3
Probe Gap	The gap between two probes is approximately 107,700 kb.			



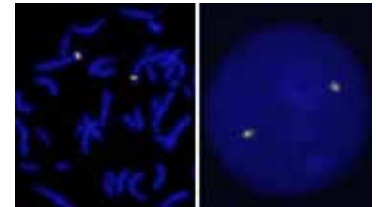
Cat.Num	FG0028FS0001			
Product Name	9q34/CEN9q FISH Probe			
	Probe Name	Size	Fluorophore	Location
Probe 1	9q34	Approximately 330kb	Texas Red	9q34
Probe 2	CEN9q	Approximately 470kb	FITC	9q21
Probe Gap	The gap between two probes is approximately 61,400 kb.			



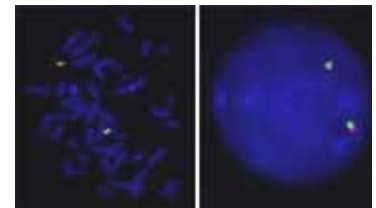
Split FISH Probes

Product Information

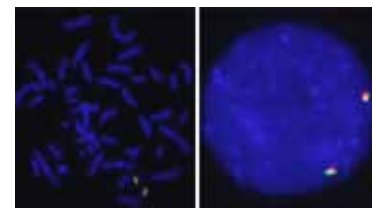
Cat.Num	FS0001			
Product Name	ALK Split FISH Probe			
	Probe Name	Size	Fluorophore	Location
Probe 1	ALK(FITC)	Approximately 770kb	FITC	2p23
Probe 2	ALK(Texas Red)	Approximately 640kb	Texas Red	2p23
Probe Gap	The gap between two probes is approximately 0 kb.			



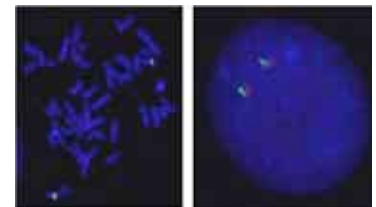
Cat.Num	FS0008			
Product Name	ERG Split FISH Probe			
	Probe Name	Size	Fluorophore	Location
Probe 1	ERG(Texas Red)	Approximately 330kb	Texas Red	21q22.2-22.3
Probe 2	ERG(FITC)	Approximately 540kb	FITC	21q22.2-22.3
Probe Gap	The gap between two probes is approximately 70 kb.			



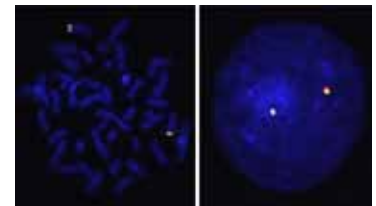
Cat.Num	FS0003			
Product Name	EWSR1 Split FISH Probe			
	Probe Name	Size	Fluorophore	Location
Probe 1	EWSR1(Texas Red)	Approximately 590kb	Texas Red	22q12
Probe 2	EWSR1(FITC)	Approximately 610kb	FITC	22q12
Probe Gap	The gap between two probes is approximately 40 kb.			



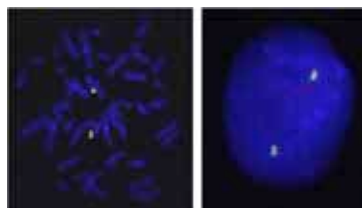
Cat.Num	FS0010			
Product Name	FKHR Split FISH Probe			
	Probe Name	Size	Fluorophore	Location
Probe 1	FKHR(FITC)	Approximately 600kb	FITC	13q14.1
Probe 2	FKHR(Texas Red)	Approximately 510kb	Texas Red	13q14.1
Probe Gap	The gap between two probes is approximately 90 kb.			



Cat.Num	FS0006			
Product Name	MYC Split FISH Probe			
	Probe Name	Size	Fluorophore	Location
Probe 1	MYC(FITC)	Approximately 400kb	FITC	8q24.21
Probe 2	MYC(Texas Red)	Approximately 340kb	Texas Red	8q24.21
Probe Gap	The gap between two probes is approximately 0 kb.			



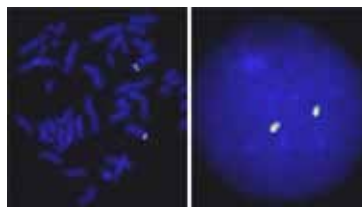
Split FISH Probes



Product Information

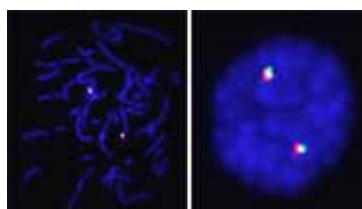
Cat.Num FS0009
Product Name PDGFB Split FISH Probe

	Probe Name	Size	Fluorophore	Location
Probe 1	PDGFB(Texas Red)	Approximately 470kb	Texas Red	22q13.1
Probe 2	PDGFB(FITC)	Approximately 610kb	FITC	22q13.1
Probe Gap	The gap between two probes is approximately 50 kb			



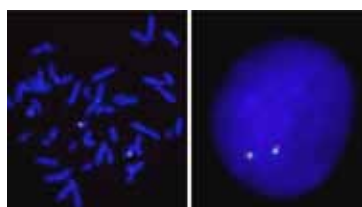
Cat.Num FS0007
Product Name PDGFRB Split FISH Probe

	Probe Name	Size	Fluorophore	Location
Probe 1	PDGFRB(Texas Red)	Approximately 380kb	Texas Red	5q33
Probe 2	PDGFRB(FITC)	Approximately 560kb	FITC	5q33
Probe Gap	The gap between two probes is approximately 0 kb.			



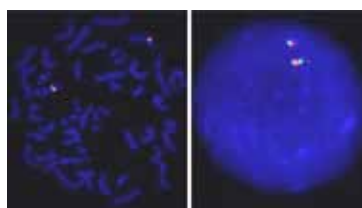
Cat.Num FS0005
Product Name RARA Split FISH Probe

	Probe Name	Size	Fluorophore	Location
Probe 1	RARA(Texas Red)	Approximately 490kb	Texas Red	17q21.2
Probe 2	RARA(FITC)	Approximately 690kb	FITC	17q21.2
Probe Gap	The gap between two probes is approximately 15 kb.			



Cat.Num FS0002
Product Name SYT Split FISH Probe

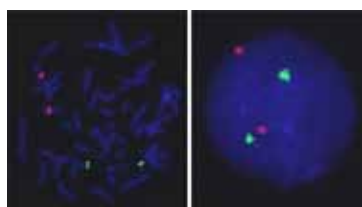
	Probe Name	Size	Fluorophore	Location
Probe 1	SYT(FITC)	Approximately 700kb	FITC	18q11.2
Probe 2	SYT(Texas Red)	Approximately 500kb	Texas Red	18q11.2
Probe Gap	The gap between two probes is approximately 110 kb.			



Cat.Num FS0004
Product Name TFE3 Split FISH Probe

	Probe Name	Size	Fluorophore	Location
Probe 1	TFE3(Texas Red)	Approximately 570kb	Texas Red	Xp11.22
Probe 2	TFE3(FITC)	Approximately 550kb	FITC	Xp11.22
Probe Gap	The gap between two probes is approximately 90 kb.			

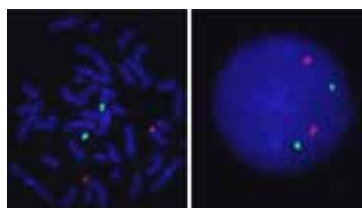
Translocation FISH Probes



Product Information

Cat.Num FT0003
Product Name AML1/ETO DY Translocation FISH Probe

	Probe Name	Size	Fluorophore	Location
Probe 1	AML1	Approximately 1340kb	FITC	21q22.12
Probe 2	ETO	Approximately 1110kb	Texas Red	8q21.3



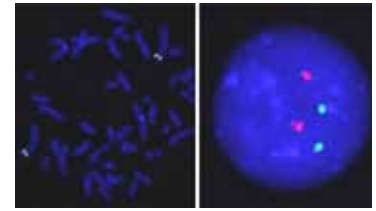
Cat.Num FT0002
Product Name bcr/abl DY Translocation FISH Probe

	Probe Name	Size	Fluorophore	Location
Probe 1	BCR	Approximately 1520kb	FITC	22q11.23
Probe 2	ABL	Approximately 780kb	Texas Red	9q34.1

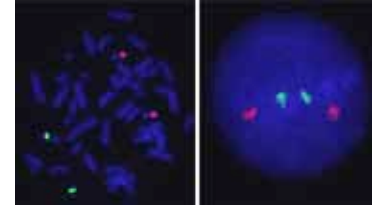
Translocation FISH Probes

Product Information

Cat.Num	FT0001			
Product Name	EML4/ALK DY Translocation FISH Probe			
	Probe Name	Size	Fluorophore	Location
Probe 1	EML4	Approximately 1130kb	FITC	2p22-p21
Probe 2	ALK	Approximately 700kb	Texas Red	2p23
Probe Gap	The gap between two probes is approximately 13,900 kb.			



Cat.Num	FT0004			
Product Name	PML/RARA DY Translocation FISH Probe			
	Probe Name	Size	Fluorophore	Location
Probe 1	RARA	Approximately 1200kb	FITC	17q21.2
Probe 2	PML	Approximately 540kb	Texas Red	15q24.1



Representative images of normal human cell (lymphocyte) stain with the dual color FISH probe. The left image is chromosomes at metaphase, and the right image is an interphase nucleus.

Accessory Kits & Reagents

Product Name : FFPE FISH PreTreatment Kit

Cat. Num. : KA1122

Product Description :

Pre-treatment is an essential step for effective FISH on Formalin-Fixed Paraffin-Embedded (FFPE) tissue sections. This kit contains key reagents used to pretreat FFPE tissue sections from dewaxing with xylene through proteolytic digestion to help permeabilization of cell membranes to facilitate penetration of fluorescence labeled probes. After proteolytic digestion, proceed the subsequent steps with the FISH assay protocol.



Kit content:

1. Pretreatment Solution, 500 mL
2. Protease (Pepsin), 0.5ml x 10 vials
3. Protease Buffer (HCl solution, pH 2), 500 mL

Accessory Kits & Reagents

Cat. Num.	Product Name	Product Description
U0032	Antifade Solution	Antifade Solution is comprised of Antifade and glycerol in an aqueous buffer solution.
U0030	DAPI Counterstain (150ng/ml)	DAPI is the recommended counterstain for FISH probes. This concentration of DAPI provides a weaker DAPI stain usually preferred with smaller probe signals such as FISH probes.
U0031	DAPI Counterstain (1500ng/ml)	Recommended counterstain when a more intense DAPI stain is desired. Provides more distinct DAPI banding patterns than achievable with DAPI Counterstain (150ng/ml) in certain applications such as staining of nuclear DNA in paraffin sections.
U0028	FISH Hybridization Buffer(1ml)	FISH Hybridization Buffer is optimized for performance with FISH probes and contains dextran sulfate, formamide, and SSC (pH 7.0).
U0029	FISH Hybridization Buffer(5ml)	FISH Hybridization Buffer is optimized for performance with FISH probes and contains dextran sulfate, formamide, and SSC (pH 7.0).

