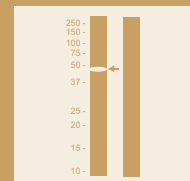


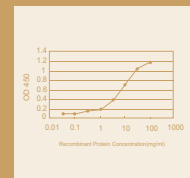
Mitochondria



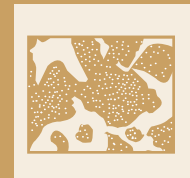
Western Blot



Sandwich ELISA



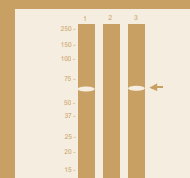
Immunohistochemistry



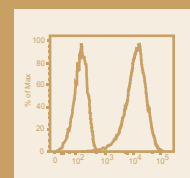
Immunofluorescence



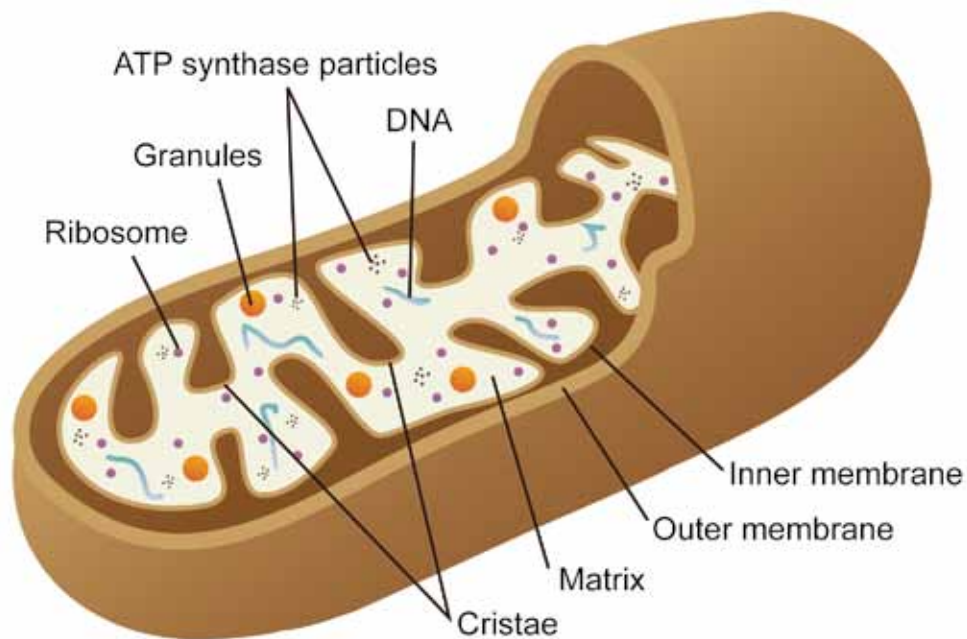
Immunoprecipitation



Flow Cytometry



Mitochondrial Antibodies	1
Mitochondrial Proteins	37
Kits for Mitochondrial Research	51
Chimera RNAi for Mitochondrial Research	52



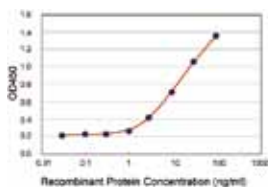
Abnova Corporation

www.abnova.com

Email: sales@abnova.com

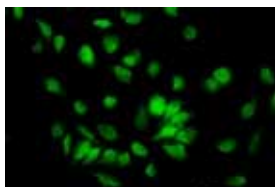
Address: 9F, No. 108, Jhouzih St., Neihu, Taipei 114, Taiwan

Tel: + 886 2 8751 1888 Fax: + 886 2 6602 1218



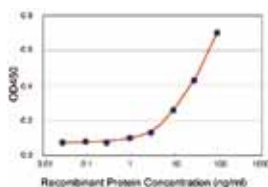
H00000204-M01

Detection limit for recombinant GST tagged AK2 is 1 ng/ml as a capture antibody.



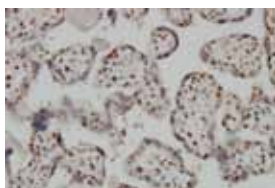
H00008125-M01

Immunofluorescence of monoclonal antibody to ANP32A on HeLa cell. [antibody concentration 10 ug/ml]



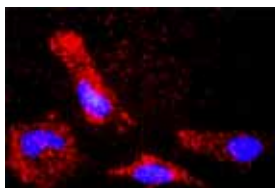
H00008030-M03

Detection limit for recombinant GST tagged APOL6 is 0.3 ng/ml as a capture antibody.



H00000581-M01

Immunoperoxidase of monoclonal antibody to BAX on formalin-fixed paraffin-embedded human placenta. [antibody concentration 3 ug/ml]



H00000581-M01

HeLa cells were stained with anti-BCL2L1 rabbit purified polyclonal 1:1200 and anti-BAX mouse monoclonal antibody 1:50. Each red dot represents the detection of BCL2L1 and BAX interaction.

Mitochondrial Antibodies

Cat. Num.	Product Name	Application
H00000204-B01	AK2 MaxPab mouse polyclonal antibody (B01)	Det Ab,WB-Tr
H00000204-M01	AK2 monoclonal antibody (M01), clone 3F1	ELISA,S-ELISA
PAB3993	AK2 polyclonal antibody	ELISA,IHC-P,WB-Ce,WB-Ti
PAB3994	AK2 polyclonal antibody	ELISA,IHC-P,WB-Ce
H00000204-B01P	AK2 purified MaxPab mouse polyclonal antibody (B01P)	Det Ab,WB-Tr
H00000204-D01P	AK2 purified MaxPab rabbit polyclonal antibody (D01P)	Det Ab,WB-Ti,WB-Tr
H00008125-M01	ANP32A monoclonal antibody (M01), clone 2G11-4A5	ELISA,IF,IHC-P,WB-Ce,WB-Re
MAB5147	ANP32A monoclonal antibody, clone RJ1	ICC,IP,WB
PAB13111	ANP32A polyclonal antibody	ICC,IHC,WB-Ce
PAB11955	ANP32A polyclonal antibody	WB
PAB11956	ANP32A polyclonal antibody	WB
PAB12899	ANP32A polyclonal antibody	ICC,WB-Ce
PAB12901	ANP32A polyclonal antibody	IHC-P,WB
PAB13112	ANP32A polyclonal antibody	IHC-P,WB-Ce
H00008125-A01	ANP32A polyclonal antibody (A01)	ELISA,WB-Re
PAB12900	ANP32E polyclonal antibody	IHC-P,WB
H00000317-B01	APAF1 MaxPab mouse polyclonal antibody (B01)	Det Ab,WB-Tr
MAB0818	APAF1 monoclonal antibody, clone 14E3	IP,WB-Ce
MAB7912	APAF1 monoclonal antibody, clone 22D7	ELISA,WB-Ce
MAB2746	APAF1 monoclonal antibody, clone 2E10	ICC,IHC,WB-Ce
MAB3406	APAF1 monoclonal antibody, clone 2E12	ELISA,ICC,IHC-Fr,IP,WB
MAB2747	APAF1 monoclonal antibody, clone 5E11	ICC,IHC
PAB8539	APAF1 polyclonal antibody	WB-Ti
PAB0325	APAF1 polyclonal antibody	IHC-P,IP
PAB0846	APAF1 polyclonal antibody	WB-Ce
PAB11191	APAF1 polyclonal antibody	IHC-P
PAB13075	APAF1 polyclonal antibody	IHC-P,WB-Ce
PAB13678	APAF1 polyclonal antibody	IHC-P,WB-Ce
PAB18086	APAF1 polyclonal antibody	ELISA,IHC,IHC-P,WB-Ce
PAB9764	APAF1 polyclonal antibody	WB-Ti
PAB9765	APAF1 polyclonal antibody	WB
H00000317-A01	APAF1 polyclonal antibody (A01)	ELISA,WB-Re
H00000317-D01P	APAF1 purified MaxPab rabbit polyclonal antibody (D01P)	Det Ab,WB-Ce,WB-Tr
H00008030-M03	APOL6 monoclonal antibody (M03), clone 1F7	ELISA,S-ELISA,WB-Re
PAB15606	APOL6 polyclonal antibody	ELISA,WB-Ti
PAB17038	APOL6 polyclonal antibody	ELISA,WB-Ti
H00000581-M01	BAX monoclonal antibody (M01), clone 1F5-1B7	ELISA,IF,IHC-P,PLA-Ce,WB-Re
MAB1800	BAX monoclonal antibody, clone 2D2	WB
MAB1744	BAX monoclonal antibody, clone 6036A7	IHC,WB-Ce
MAB1809	BAX monoclonal antibody, clone 6A7	IP
MAB6545	BAX monoclonal antibody, clone SP47	IHC-P
PAB0810	BAX polyclonal antibody	WB
PAB12656	BAX polyclonal antibody	ELISA,IHC-P,IP,WB
PAB12927	BAX polyclonal antibody	ICC,WB-Ce
PAB14773	BAX polyclonal antibody	IHC-P
PAB17536	BAX polyclonal antibody	ELISA,IF,IHC-P,WB-Ce
PAB17537	BAX polyclonal antibody	ELISA,IHC-P
PAB17538	BAX polyclonal antibody	ELISA,IF,IHC-P
PAB18268	BAX polyclonal antibody	ELISA,IF,WB-Ce
PAB7955	BAX polyclonal antibody	WB-Ce
PAB8564	BAX polyclonal antibody	IP,WB-Ti
PAB9790	BAX polyclonal antibody	IP
H00000581-A01	BAX polyclonal antibody (A01)	ELISA,WB-Re
H00000581-A02	BAX polyclonal antibody (A02)	ELISA,WB-Re
MAB2756	BBC3 monoclonal antibody, clone 10C5G1	WB-Ce
MAB2757	BBC3 monoclonal antibody, clone 10D4G7	WB-Ce
MAB2754	BBC3 monoclonal antibody, clone 2A8F6	WB-Ce
MAB2755	BBC3 monoclonal antibody, clone 2A9G5	WB-Ce
PAB0845	BBC3 polyclonal antibody	WB-Ce
PAB1042	BBC3 polyclonal antibody	WB-Tr
PAB11252	BBC3 polyclonal antibody	ELISA,ICC,WB-Ce
PAB12544	BBC3 polyclonal antibody	WB-Ce
PAB12555	BBC3 polyclonal antibody	WB
PAB13106	BBC3 polyclonal antibody	IHC-P,WB-Ce
PAB14462	BBC3 polyclonal antibody	WB

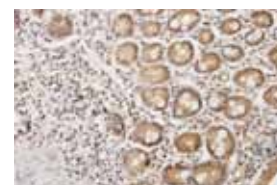
Mitochondrial Antibodies

Cat. Num.	Product Name	Application
PAB14849	BBC3 polyclonal antibody	WB
PAB15423	BBC3 polyclonal antibody	ICC,IHC,WB-Ce
PAB17894	BBC3 polyclonal antibody	WB
PAB18947	BBC3 polyclonal antibody	ELISA,WB-Ce
PAB9010	BBC3 polyclonal antibody	IF,WB-Ce
PAB6001	BCL7A polyclonal antibody	ELISA,WB-Ti
H00051651-B01	BIT1 MaxPab mouse polyclonal antibody (B01)	Det Ab,WB-Tr
H00051651-B02	BIT1 MaxPab mouse polyclonal antibody (B02)	Det Ab,WB-Ti,WB-Tr
PAB0264	BNIP3 polyclonal antibody	IHC-Fr,IHC-P,IP
PAB12519	BNIP3 polyclonal antibody	WB
PAB7995	BNIP3 polyclonal antibody	WB-Ti
H0000664-D01P	BNIP3 purified MaxPab rabbit polyclonal antibody (D01P)	Det Ab,WB-Tr
H00414899-B01	BRCC2 MaxPab mouse polyclonal antibody (B01)	Det Ab,IF,WB-Tr
H00414899-M05	BRCC2 monoclonal antibody (M05), clone 3F4	ELISA,IF,WB-Re
H00414899-A01	BRCC2 polyclonal antibody (A01)	ELISA,WB-Re
H0000706-B01	BZRP MaxPab mouse polyclonal antibody (B01)	Det Ab,WB-Tr
H0000706-M01	BZRP monoclonal antibody (M01), clone 3D8-B2	ELISA,S-ELISA,WB-Re
H0000706-A01	BZRP polyclonal antibody (A01)	ELISA
PAB4614	CKMT1A polyclonal antibody	ELISA,WB-Ce,WB-Ti
PAB4615	CKMT1A polyclonal antibody	ELISA,WB-Ti
PAB7536	CLIC4 polyclonal antibody	ELISA,IF,WB-Ti
PAB14841	COX1 polyclonal antibody	WB-Ce
H00054205-B01	CYCS MaxPab mouse polyclonal antibody (B01)	Det Ab,WB-Tr
MAB0791	CYCS monoclonal antibody, clone 14G6	WB-Ce
PAB11762	CYCS polyclonal antibody	IHC-P
PAB8027	CYCS polyclonal antibody	ICC,IHC-Fr,IHC-P,WB
H00054205-A01	CYCS polyclonal antibody (A01)	ELISA,WB-Re
H00054205-D01P	CYCS purified MaxPab rabbit polyclonal antibody (D01P)	Det Ab,PLA-Ce,WB-Tr
H00007818-B02	DAP3 MaxPab mouse polyclonal antibody (B02)	Det Ab,WB-Tr
H00007818-M01	DAP3 monoclonal antibody (M01), clone 3B7	ELISA,WB-Re
PAB6163	DAP3 polyclonal antibody	ELISA,WB-Ce,WB-Tr
H00007818-A01	DAP3 polyclonal antibody (A01)	ELISA
H00007818-B02P	DAP3 purified MaxPab mouse polyclonal antibody (B02P)	Det Ab,WB-Tr
H00056616-B01	DIABLO MaxPab mouse polyclonal antibody (B01)	Det Ab,WB-Ti,WB-Tr
H00056616-M02	DIABLO monoclonal antibody (M02), clone 4F9	ELISA,S-ELISA,WB-Tr
H00056616-M02A	DIABLO monoclonal antibody (M02A), clone 4F9	ELISA
MAB7760	DIABLO monoclonal antibody, clone 2D12	ELISA,WB
MAB2350	DIABLO monoclonal antibody, clone 78-1-118	IP,WB
PAB0847	DIABLO polyclonal antibody	WB-Ce
PAB1037	DIABLO polyclonal antibody	WB
PAB11261	DIABLO polyclonal antibody	ELISA,IP,WB-Ce,WB-Re
PAB1203	DIABLO polyclonal antibody	WB-Ce
PAB13089	DIABLO polyclonal antibody	IHC-P,WB-Ti
PAB14673	DIABLO polyclonal antibody	IHC-Fr,IHC-P,IP,WB
H00056616-D01P	DIABLO purified MaxPab rabbit polyclonal antibody (D01P)	Det Ab,WB-Tr
H00009093-B01	DNAJA3 MaxPab mouse polyclonal antibody (B01)	Det Ab,IF,WB-Tr
H00009093-B01P	DNAJA3 purified MaxPab mouse polyclonal antibody (B01P)	Det Ab,IF,WB-Tr
H00010059-M01	DNM1L monoclonal antibody (M01), clone 3B5	ELISA,IHC-P,S-ELISA,WB-Ce,WB-Re,WB-Tr
H00010059-M02	DNM1L monoclonal antibody (M02), clone 1D6	ELISA,S-ELISA,WB-Re
PAB12446	DNM1L polyclonal antibody	IHC,WB-Ce
PAB12447	DNM1L polyclonal antibody	IHC,WB-Ce
H00023474-B01	ETHE1 MaxPab mouse polyclonal antibody (B01)	Det Ab,IF,IHC-P,WB-Ti,WB-Tr
H00023474-B01P	ETHE1 purified MaxPab mouse polyclonal antibody (B01P)	Det Ab,IF,IHC-P,WB-Ti,WB-Tr
H00051024-M01	FIS1 monoclonal antibody (M01), clone 1G9	ELISA,IHC-P,S-ELISA,WB-Ce,WB-Re,WB-Ti
H00051024-M01A	FIS1 monoclonal antibody (M01A), clone 1G9	ELISA,WB-Ce,WB-Re,WB-Ti
H00051024-M02	FIS1 monoclonal antibody (M02), clone 3G6	ELISA,S-ELISA,WB-Ce,WB-Re
H00051024-M09	FIS1 monoclonal antibody (M09), clone 3C8	ELISA,S-ELISA,WB-Re
PAB8718	FIS1 polyclonal antibody	IF,IHC,IP,WB
PAB5619	FIS1 polyclonal antibody	ELISA,WB
PAB8719	FIS1 polyclonal antibody	IF,WB-Ce
MAB1758	Holocytochrome c monoclonal antibody, clone 2CYZ-702	IP,WB
H00027429-M02	HTRA2 monoclonal antibody (M02), clone 4F10	ELISA,IF,S-ELISA,WB-Ce,WB-Re
H00027429-M03	HTRA2 monoclonal antibody (M03), clone 3G5	ELISA,IF,S-ELISA,WB-Ce,WB-Re
H00027429-M04	HTRA2 monoclonal antibody (M04), clone 6H8	ELISA,IF,S-ELISA,WB-Ce,WB-Re
MAB0099	HTRA2 monoclonal antibody, clone 196C429	IHC-P,WB-Ce



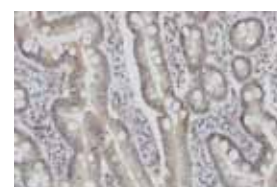
H00010059-M01

Immunoperoxidase of monoclonal antibody to DNM1L on formalin-fixed paraffin-embedded human leiomyosarcoma tissue. [antibody concentration 1ug/ml]



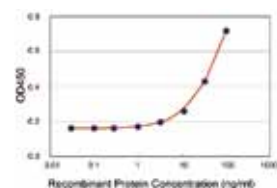
H00023474-B01P

Immunoperoxidase of purified MaxPab antibody to ETHE1 on formalin-fixed paraffin-embedded human small Intestine. [antibody concentration 3 ug/ml]



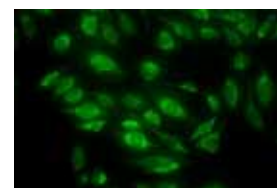
H00051024-M01

Immunoperoxidase of monoclonal antibody to FIS1 on formalin-fixed paraffin-embedded human small Intestine. [antibody concentration 3 ug/ml]



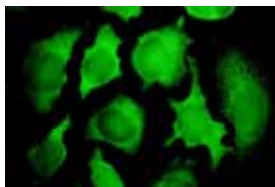
H00051024-M01

Detection limit for recombinant GST tagged FIS1 is approximately 1ng/ml as a capture antibody.



H00027429-M02

Immunofluorescence of monoclonal antibody to HTRA2 on HeLa cell. [antibody concentration 30 ug/ml]



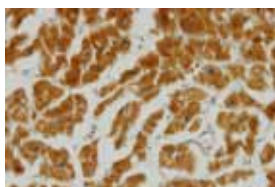
H00009768-M01

Immunofluorescence of monoclonal antibody to KIAA0101 on HeLa cell. [antibody concentration 10 ug/ml]



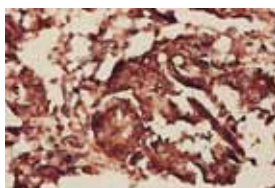
H00009927-M01

Immunoperoxidase of monoclonal antibody to MFN2 on formalin-fixed paraffin-embedded human kidney. [antibody concentration 3 ug/ml]



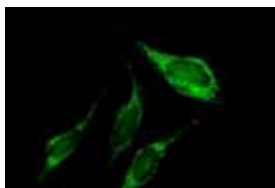
H00009927-M03

Immunoperoxidase of monoclonal antibody to MFN2 on formalin-fixed paraffin-embedded human heart. [antibody concentration 5 ug/ml]



H00005245-M01

Immunoperoxidase of monoclonal antibody to PHB on formalin-fixed paraffin-embedded human colon adenocarcinoma. [antibody concentration 5 ug/ml]



H00087178-B01P

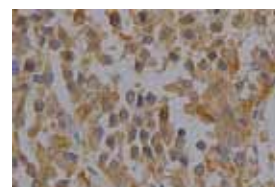
Immunofluorescence of purified MaxPab antibody to PNPT1 on HeLa cell. [antibody concentration 10 ug/ml]

Mitochondrial Antibodies

Cat. Num.	Product Name	Application
MAB1070	HTRA2 monoclonal antibody, clone 1B3	ELISA,WB
PAB13107	HTRA2 polyclonal antibody	IHC-P,WB-Ce
PAB13117	HTRA2 polyclonal antibody	IHC-P,WB-Ti
PAB17916	HTRA2 polyclonal antibody	WB
PAB2459	HTRA2 polyclonal antibody	ELISA
PAB2460	HTRA2 polyclonal antibody	ELISA,IHC-P
PAB8777	HTRA2 polyclonal antibody	IF,WB
H00003443-B01	IFNA6 MaxPab mouse polyclonal antibody (B01)	Det Ab,WB-Tr
H00003443-M01	IFNA6 monoclonal antibody (M01), clone 3C9	ELISA,IP,S-ELISA,WB-Re
H00003443-A01	IFNA6 polyclonal antibody (A01)	ELISA,WB-Re
H00003443-B01P	IFNA6 purified MaxPab mouse polyclonal antibody (B01P)	Det Ab,WB-Tr
H00003443-D01P	IFNA6 purified MaxPab rabbit polyclonal antibody (D01P)	Det Ab,WB-Tr
H00009768-M01	KIAA0101 monoclonal antibody (M01), clone 3C11-1F11	ELISA,IF,IHC-P,S-ELISA,WB-Ce,WB-Re
H00009768-B01P	KIAA0101 purified MaxPab mouse polyclonal antibody (B01P)	Det Ab,WB-Tr
H00009927-M01	MFN2 monoclonal antibody (M01), clone 6A8	ELISA,IHC-P,S-ELISA,WB-Ce
H00009927-M02A	MFN2 monoclonal antibody (M02A), clone 6A2	ELISA,WB-Ce,WB-Re
H00009927-M03	MFN2 monoclonal antibody (M03), clone 4H8	ELISA,IHC-P,RNAi-Ab,S-ELISA,WB-Ce,WB-Re,WB-Tr
H00009927-M03J	MFN2 monoclonal antibody (M03J), clone 4H8	ELISA,WB-Re
H00009927-M07	MFN2 monoclonal antibody (M07), clone 4F5	ELISA,WB-Ce,WB-Re,WB-Ti
PAB7989	MFN2 polyclonal antibody	WB-Ti
PAB8839	MFN2 polyclonal antibody	WB-Ce
H00009927-A01	MFN2 polyclonal antibody (A01)	ELISA,WB-Re
H00009650-B01	MTFR1 MaxPab mouse polyclonal antibody (B01)	Det Ab,WB-Tr
H00009650-B01P	MTFR1 purified MaxPab mouse polyclonal antibody (B01P)	Det Ab,WB-Tr
PAB17790	MT-ND1 polyclonal antibody	ELISA,IHC-P,WB-Ce
PAB17791	MT-ND5 polyclonal antibody	ELISA,WB-Ce
H00051537-B01	MTP18 MaxPab mouse polyclonal antibody (B01)	Det Ab,WB-Ti,WB-Tr
H00051537-D01	MTP18 MaxPab rabbit polyclonal antibody (D01)	IP,WB-Tr
H00051537-B01P	MTP18 purified MaxPab mouse polyclonal antibody (B01P)	Det Ab,WB-Ti,WB-Tr
H00051537-D01P	MTP18 purified MaxPab rabbit polyclonal antibody (D01P)	Det Ab,WB-Tr
H00004535-A01	ND1 polyclonal antibody (A01)	ELISA,WB-Ce,WB-Re
H00004538-A01	ND4 polyclonal antibody (A01)	ELISA,WB-Re
PAB13061	PARL polyclonal antibody	ICC,WB-Ce
H00005245-M01	PHB monoclonal antibody (M01), clone 3F4-2B2	ELISA,IF,IHC-P,S-ELISA,WB-Ce,WB-Re
H00005245-M02	PHB monoclonal antibody (M02), clone 4B12-2G12	ELISA,S-ELISA,WB-Re
PAB11740	PHB polyclonal antibody	IHC-P
PAB18886	PHB polyclonal antibody	ELISA,IHC-P,WB-Ce
PAB2547	PHB polyclonal antibody	ELISA,WB-Tr
PAB2548	PHB polyclonal antibody	ELISA,WB-Tr
PAB9007	PHB polyclonal antibody	IF,IP,WB-Ce
H00057048-B01	PLSCR3 MaxPab mouse polyclonal antibody (B01)	Det Ab,WB-Tr
H00057048-D01	PLSCR3 MaxPab rabbit polyclonal antibody (D01)	Det Ab,IF,WB-Ti
H00057048-M02	PLSCR3 monoclonal antibody (M02), clone 4B5	ELISA,WB-Ce,WB-Re
H00057048-M04	PLSCR3 monoclonal antibody (M04), clone 4F5	ELISA,WB-Ce,WB-Re
H00057048-M08	PLSCR3 monoclonal antibody (M08), clone 1B5	ELISA,WB-Ce,WB-Re
H00057048-M09	PLSCR3 monoclonal antibody (M09), clone 2C8	ELISA,RNAi-Ab,WB-Ce,WB-Re,WB-Tr
H00057048-M10	PLSCR3 monoclonal antibody (M10), clone 4D11	ELISA,S-ELISA,WB-Re,WB-Tr
H00057048-A01	PLSCR3 polyclonal antibody (A01)	ELISA,WB-Re
H00057048-D01P	PLSCR3 purified MaxPab rabbit polyclonal antibody (D01P)	Det Ab,WB-Ti,WB-Tr
H00087178-B01	PNPT1 MaxPab mouse polyclonal antibody (B01)	Det Ab,IF,WB-Ce,WB-Ti,WB-Tr
H00087178-D01	PNPT1 MaxPab rabbit polyclonal antibody (D01)	Det Ab,IF,WB-Ce,WB-Ti,WB-Tr
H00087178-B01P	PNPT1 purified MaxPab mouse polyclonal antibody (B01P)	Det Ab,IF,WB-Ce,WB-Ti,WB-Tr
H00087178-D01P	PNPT1 purified MaxPab rabbit polyclonal antibody (D01P)	Det Ab,WB-Ce,WB-Ti,WB-Tr
MAB3214	PPIF monoclonal antibody, clone AT1F5	ELISA,WB-Ce
H00010105-A01	PPIF polyclonal antibody (A01)	ELISA,WB-Re
H00005052-M01	PRDX1 monoclonal antibody (M01), clone 4B11-D10	ELISA,S-ELISA,WB-Ce
H00005052-M02	PRDX1 monoclonal antibody (M02), clone 4B11-G10	ELISA,IHC-P,S-ELISA,WB-Ce,WB-Re,WB-Tr
MAB0714	PRDX1 monoclonal antibody, clone 13E7	ELISA,IP
MAB0713	PRDX1 monoclonal antibody, clone 2A4	IP
MAB0846	PRDX1 monoclonal antibody, clone 3G5	ELISA,IP,WB-Ce
MAB0690	PRDX1 monoclonal antibody, clone 9D2	ICC,IP
MAB7559	PRDX1 monoclonal antibody, clone AT1D8	ELISA,WB-Ce
PAB11441	PRDX1 polyclonal antibody	ELISA,WB-Ce
PAB8052	PRDX1 polyclonal antibody	ELISA,IF,WB
PAB1218	PRDX1 polyclonal antibody	WB-Ce

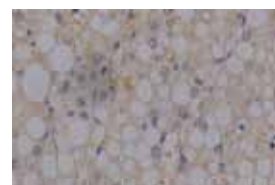
Mitochondrial Antibodies

Cat. Num.	Product Name	Application
PAB1328	PRDX1 polyclonal antibody	WB
H00005052-A01	PRDX1 polyclonal antibody (A01)	ELISA
H00009588-M01	PRDX6 monoclonal antibody (M01), clone 3A10-2A11	ELISA,WB-Re
MAB0676	PRDX6 monoclonal antibody, clone 1A11	ELISA,ICC,IP,WB-Ce
MAB9947	PRDX6 monoclonal antibody, clone 36	ELISA,IHC,WB-Ce,WB-Re
MAB0681	PRDX6 monoclonal antibody, clone 4A3	ELISA,WB
MAB9907	PRDX6 monoclonal antibody, clone 5	ELISA,WB-Ce
MAB9948	PRDX6 monoclonal antibody, clone 52	ELISA,IHC,WB-Ce
MAB0712	PRDX6 monoclonal antibody, clone 5E1	ELISA,IP
MAB0741	PRDX6 monoclonal antibody, clone 6H5	ELISA,IP
MAB8862	PRDX6 monoclonal antibody, clone 945d0	ELISA,WB-Ce,WB-Re
PAB1191	PRDX6 polyclonal antibody	IHC,IP,WB
PAB1305	PRDX6 polyclonal antibody	WB
H00027429-A01	PRSS25 polyclonal antibody (A01)	ELISA,WB-Re
H0005486-M02	PSARL monoclonal antibody (M02), clone 4F4	ELISA,S-ELISA
PAB13163	PTRH2 polyclonal antibody	ICC,WB-Ce
PAB13164	PTRH2 polyclonal antibody	IHC-P,WB-Ce
PAB2451	PTRH2 polyclonal antibody	ELISA
PAB2452	PTRH2 polyclonal antibody	ELISA
PAB11045	RAF1 (phospho S259) polyclonal antibody	IHC,WB
PAB17919	RAF1 (phospho S259) polyclonal antibody	IHC,WB
PAB8117	RAF1 (phospho S259) polyclonal antibody	Dot-Pep,ELISA
PAB0591	RAF1 (phospho S296) polyclonal antibody	Dot-Pep,ELISA
PAB0590	RAF1 (phospho S338) polyclonal antibody	Dot-Pep,ELISA
PAB12259	RAF1 (phospho S338) polyclonal antibody	WB-Ce
PAB1669	RAF1 (phospho S339) polyclonal antibody	Dot-Pep,ELISA
PAB0592	RAF1 (phospho S43) polyclonal antibody	Dot-Pep,ELISA,WB-Ti
PAB0593	RAF1 (phospho S471) polyclonal antibody	Dot-Pep,ELISA
PAB8133	RAF1 (phospho S494) polyclonal antibody	Dot-Pep,ELISA
PAB0594	RAF1 (phospho T269) polyclonal antibody	Dot-Pep,ELISA
PAB8119	RAF1 (phospho Y340) polyclonal antibody	Dot-Pep,ELISA
PAB8148	RAF1 (phospho Y341) polyclonal antibody	Dot-Pep,ELISA
H00005894-B01	RAF1 MaxPab mouse polyclonal antibody (B01)	Det Ab,IF,WB-Tr
H00005894-M03	RAF1 monoclonal antibody (M03), clone 1H4	ELISA,PLA-Ce,RNAi-Ab,WB-Re,WB-Tr
MAB6408	RAF1 monoclonal antibody, clone 163	ELISA,WB
MAB6405	RAF1 monoclonal antibody, clone 410	ELISA,WB
MAB6406	RAF1 monoclonal antibody, clone 540	ELISA,WB
MAB6407	RAF1 monoclonal antibody, clone 863	ELISA,WB
MAB4327	RAF1 monoclonal antibody, clone BDI449	ELISA,WB
MAB6771	RAF1 monoclonal antibody, clone M208	ELISA,WB-Ce
MAB5144	RAF1 monoclonal antibody, clone PS338 [DPR/2/2A/3A]	IHC-P
PAB18217	RAF1 polyclonal antibody	ELISA,IF,IHC-P,WB-Ce
PAB18238	RAF1 polyclonal antibody	ELISA,IHC-P,WB-Ce
PAB18335	RAF1 polyclonal antibody	ELISA,IHC-P,WB-Ce
PAB3487	RAF1 polyclonal antibody	ELISA,IHC-P,WB-Ce
PAB3488	RAF1 polyclonal antibody	ELISA,IHC-P
PAB3489	RAF1 polyclonal antibody	ELISA,IHC-P
PAB3490	RAF1 polyclonal antibody	ELISA,IHC-P,WB-Tr
PAB3491	RAF1 polyclonal antibody	ELISA,IHC-P,WB-Tr
PAB3492	RAF1 polyclonal antibody	ELISA,IHC-P,WB-Tr
PAB3493	RAF1 polyclonal antibody	ELISA,IHC-P,WB-Tr
PAB3494	RAF1 polyclonal antibody	ELISA,IHC-P,WB-Tr
PAB3495	RAF1 polyclonal antibody	ELISA,IHC-P,WB-Ce
PAB3496	RAF1 polyclonal antibody	ELISA,IHC-P
PAB5545	RAF1 polyclonal antibody	IHC-P,WB-Ce
PAB7667	RAF1 polyclonal antibody	IHC-P,WB-Ce
PAB7870	RAF1 polyclonal antibody	ELISA,WB-Re
PAB9012	RAF1 polyclonal antibody	IHC,IP,WB
H00005894-A01	RAF1 polyclonal antibody (A01)	ELISA,WB-Re
H00005894-B01P	RAF1 purified MaxPab mouse polyclonal antibody (B01P)	Det Ab,IF,WB-Tr
H00010313-B01	RTN3 MaxPab mouse polyclonal antibody (B01)	Det Ab,WB-Tr
H00010313-A01	RTN3 polyclonal antibody (A01)	ELISA,WB-Re
H00010313-B01P	RTN3 purified MaxPab mouse polyclonal antibody (B01P)	Det Ab,WB-Tr
H00010313-D01P	RTN3 purified MaxPab rabbit polyclonal antibody (D01P)	Det Ab,WB-Tr
H00005414-B01	SEPT4 MaxPab mouse polyclonal antibody (B01)	Det Ab,WB-Tr



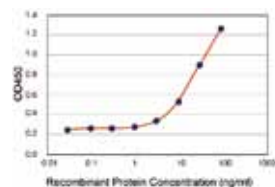
MAB9947

Immunohistochemical staining of human liver cancer tissue section with PRDX6 monoclonal antibody, clone 36 (Cat # MAB9947) at 1:100 dilution.



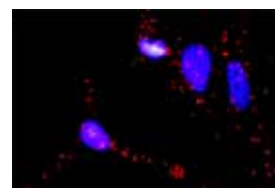
MAB9948

Immunohistochemical staining of human liver cancer tissue section with PRDX6 monoclonal antibody, clone 52 (Cat # MAB9948) at 1:100 dilution.



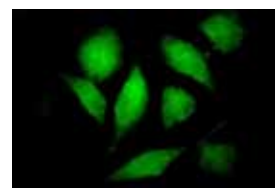
H0005486-M02

Detection limit for recombinant GST tagged PARL is 1 ng/ml as a capture antibody.



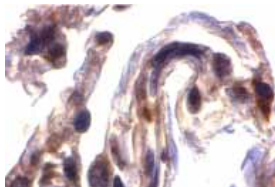
H00005894-M03

HeLa cells were stained with anti-BAD rabbit purified polyclonal 1:1200 and anti-RAF1 mouse monoclonal antibody 1:50. Each red dot represents the detection of BAD and RAF1 interaction.



H00005894-B01P

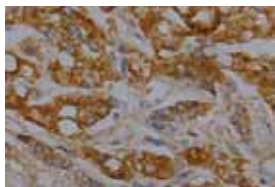
Immunofluorescence of purified MaxPab antibody to RAF1 on HeLa cell. [antibody concentration 10 ug/ml]

**PAB12882**

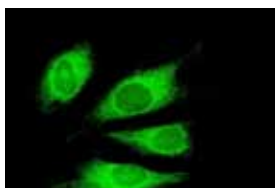
Immunohistochemistry of SEPT4 in human lung tissue with SEPT4 polyclonal antibody (Cat # PAB12882) at 2 ug/mL .

**H00051100-M01**

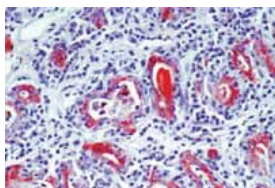
Immunoperoxidase of monoclonal antibody to SH3GLB1 on formalin-fixed paraffin-embedded human tonsil tissue. [antibody concentration 3ug/ml]

**MAB9892**

Immunohistochemical staining of human liver cancer tissue section with SOD2 monoclonal antibody, clone 18 (Cat # MAB9892) at 1:100 dilution.

**H00007038-M01**

Immunofluorescence of monoclonal antibody to TG on HeLa cell . [antibody concentration 10 ug/ml]

**MAB7015**

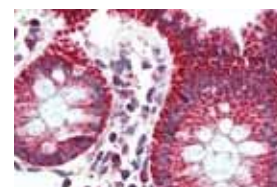
Immunoperoxidase of monoclonal antibody to SH3GLB1 on formalin-fixed paraffin-embedded human tonsil tissue. [antibody concentration 3ug/ml]

Mitochondrial Antibodies

Cat. Num.	Product Name	Application
PAB12882	SEPT4 polyclonal antibody	IHC-P,WB-Ti
PAB18783	SEPT4 polyclonal antibody	ELISA,WB-Ti
PAB18959	SEPT4 polyclonal antibody	ELISA,WB-Ti
PAB18964	SEPT4 polyclonal antibody	ELISA,WB-Ti
H00051100-B01	SH3GLB1 MaxPab mouse polyclonal antibody (B01)	Det Ab,WB-Tr
H00051100-M01	SH3GLB1 monoclonal antibody (M01), clone 1B3-A5	ELISA,IHC-P,S-ELISA,WB-Ce,WB-Re,WB-Tr
MAB3702	SH3GLB1 monoclonal antibody, clone 30A882	WB-Ce
MAB8034	SH3GLB1 monoclonal antibody, clone 30A882.1.1	IHC-P,WB
PAB12961	SH3GLB1 polyclonal antibody	ICC,WB-Ce
PAB6051	SH3GLB1 polyclonal antibody	ELISA,WB-Ce
PAB8579	SH3GLB1 polyclonal antibody	WB
H00051100-D01P	SH3GLB1 purified MaxPab rabbit polyclonal antibody (D01P)	Det Ab,WB-Ce,WB-Tr
H00006648-B01	SOD2 MaxPab mouse polyclonal antibody (B01)	Det Ab,WB-Ti,WB-Tr
H00006648-B02	SOD2 MaxPab mouse polyclonal antibody (B02)	Det Ab,WB-Ti,WB-Tr
MAB9892	SOD2 monoclonal antibody, clone 18	ELISA,IHC,WB-Ce
MAB0692	SOD2 monoclonal antibody, clone 1E8	IP
MAB0711	SOD2 monoclonal antibody, clone 23G5	IP
MAB0689	SOD2 monoclonal antibody, clone 2A1	ELISA,WB
MAB0710	SOD2 monoclonal antibody, clone 4F10	IP
MAB8860	SOD2 monoclonal antibody, clone 97t5	ELISA,WB-Ce,WB-Re
PAB1196	SOD2 polyclonal antibody	IP,WB
PAB14493	SOD2 polyclonal antibody	ELISA,IHC,IP,WB
H00006648-B02P	SOD2 purified MaxPab mouse polyclonal antibody (B02P)	Det Ab,WB-Ti,WB-Tr
H00006648-D01P	SOD2 purified MaxPab rabbit polyclonal antibody (D01P)	Det Ab,WB-Ti,WB-Tr
H00007018-B01	TF MaxPab mouse polyclonal antibody (B01)	Det Ab,WB-Tr
MAB8253	TF monoclonal antibody	EIA,ELISA,IF
H00007018-M08	TF monoclonal antibody (M08), clone 1C2	ELISA,WB-Re
MAB3056	TF monoclonal antibody, clone 11D3	S-ELISA
MAB3057	TF monoclonal antibody, clone 12A6	S-ELISA
MAB0841	TF monoclonal antibody, clone 14C10	ELISA,IP,WB
MAB3054	TF monoclonal antibody, clone 1C10	S-ELISA
MAB3053	TF monoclonal antibody, clone 2A2	IF,IHC-P,S-ELISA
MAB0840	TF monoclonal antibody, clone 3C11	WB-Ti
MAB3055	TF monoclonal antibody, clone 8B9	S-ELISA
PAB16876	TF polyclonal antibody	ELISA,WB-Re
PAB10239	TF polyclonal antibody	ELISA,IHC,WB
PAB1303	TF polyclonal antibody	IP,WB
PAB13847	TF polyclonal antibody	TIA
PAB14522	TF polyclonal antibody	ELISA,IP
PAB15393	TF polyclonal antibody	ELISA,ID,WB
PAB15546	TF polyclonal antibody	IHC
PAB15547	TF polyclonal antibody	IHC
PAB5028	TF polyclonal antibody	EIA,IP,RIA,WB
PAB5128	TF polyclonal antibody	EIA,IP,RIA,WB
MAB6133	TG monoclonal antibody	ELISA,IF
MAB6134	TG monoclonal antibody	ELISA,IF
MAB6135	TG monoclonal antibody	ELISA,IF
MAB6136	TG monoclonal antibody	ELISA,IF
H00007038-M01	TG monoclonal antibody (M01), clone 1G3	ELISA,IF,S-ELISA,WB-Re
MAB4741	TG monoclonal antibody, clone 101	EIA
MAB4740	TG monoclonal antibody, clone 102	ELISA
MAB4742	TG monoclonal antibody, clone 104	EIA,ELISA
MAB0640	TG monoclonal antibody, clone 11A16	ELISA,S-ELISA
MAB0639	TG monoclonal antibody, clone 12G9	ELISA
MAB0976	TG monoclonal antibody, clone 2H11	IHC-P
MAB0637	TG monoclonal antibody, clone 5E6	ELISA,S-ELISA
MAB0638	TG monoclonal antibody, clone 5F9	ELISA,S-ELISA
MAB0992	TG monoclonal antibody, clone 7C2	WB
MAB3575	TG monoclonal antibody, clone RBU/01	IHC-P
MAB2121	TG monoclonal antibody, clone SPM517	IHC-P
MAB6201	TG monoclonal antibody, clone Tg 221	Flow Cyt,ICC,IF,IHC-Fr,IHC-P
MAB7015	TG monoclonal antibody, clone TGB04	IHC-Fr,IHC-P
PAB5026	TG polyclonal antibody	EIA,IP,RIA,WB
PAB14509	TG polyclonal antibody	ICC,IHC
H00007038-A01	TG polyclonal antibody (A01)	ELISA

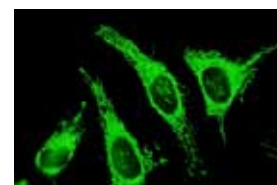
Mitochondrial Antibodies

Cat. Num.	Product Name	Application
H00007038-A02	TG polyclonal antibody (A02)	ELISA,WB-Re
PAB12268	TH (phospho S19) polyclonal antibody	IF
PAB12266	TH (phospho S40) polyclonal antibody	IF
PAB8914	TH (phospho S40) polyclonal antibody	IF,IHC,WB
MAB9140	TH monoclonal antibody, clone 3895j	IF,IHC,WB-Re
PAB0719	TH polyclonal antibody	IHC
PAB18662	TH polyclonal antibody	ELISA,WB-Ti
H00010131-B01	TRAP1 MaxPab mouse polyclonal antibody (B01)	Det Ab,IF,WB-Ti,WB-Tr
H00010131-D01	TRAP1 MaxPab rabbit polyclonal antibody (D01)	Det Ab,IP,WB-Ti,WB-Tr
PAB18793	TRAP1 polyclonal antibody	ELISA,WB-Ce
H00010131-B01P	TRAP1 purified MaxPab mouse polyclonal antibody (B01P)	Det Ab,IF,WB-Ti,WB-Tr
H00010131-D01P	TRAP1 purified MaxPab rabbit polyclonal antibody (D01P)	Det Ab,WB-Ti,WB-Tr
PAB7095	TSPO polyclonal antibody	ELISA,IHC-P,WB-Ti
H00000706-B01P	TSPO purified MaxPab mouse polyclonal antibody (B01P)	Det Ab,WB-Tr
H00000706-D01P	TSPO purified MaxPab rabbit polyclonal antibody (D01P)	Det Ab,WB-Tr
H00051024-A01	TTC11 polyclonal antibody (A01)	ELISA,WB-Ce,WB-Re
H00007416-M05	VDAC1 monoclonal antibody (M05), clone 4C4	ELISA,S-ELISA,WB-Re
H00007416-M17	VDAC1 monoclonal antibody (M17), clone 2E10	ELISA,WB-Re
H00007416-M28	VDAC1 monoclonal antibody (M28), clone 2A8	ELISA,S-ELISA,WB-Re
H00007416-M28A	VDAC1 monoclonal antibody (M28A), clone 2A8	ELISA,WB-Re
PAB9069	VDAC1 polyclonal antibody	WB-Ce
PAB1231	VDAC1 polyclonal antibody	WB-Ce
PAB11290	VDAC1 polyclonal antibody	ELISA,WB-Ti
PAB18766	VDAC1 polyclonal antibody	ELISA,WB-Ce
H00007419-M03	VDAC3 monoclonal antibody (M03), clone 1C6	ELISA,S-ELISA



H00010131-B01

Immunofluorescence of purified MaxPab antibody to TRAP1 on HeLa cell. [antibody concentration 10 ug/ml]



PAB7095

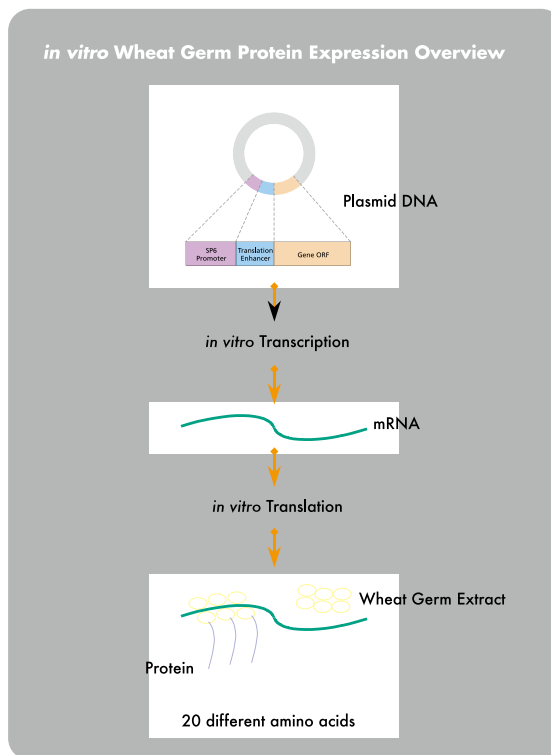
TSPO polyclonal antibody (Cat # PAB7095) (2.5 ug/mL) staining of paraffin embedded human colon. Steamed antigen retrieval with citrate buffer pH 6, AP-staining.

High Throughput Protein Expression by *in vitro* Wheat Germ System

Abnova's cell-free protein synthesis system is pioneered by Professor Yaeta Endo of Ehime University, Japan. This high throughput platform is based on the eukaryotic translation apparatus of wheat germ, which has significant advantages over other commonly used protein expression systems. With an expression vector designed for large scale protein expression, the platform is amenable to production of many proteins in parallel using robotic instruments. Assessment of the proteins produced by this technology showed many of them retained their correct foldings and biological functions.

Advantages:

- High Solubility
- High Yield
- High Success Rate
- Automated Expression and Purification
- Native Protein Conformation



Mitochondrial Proteins

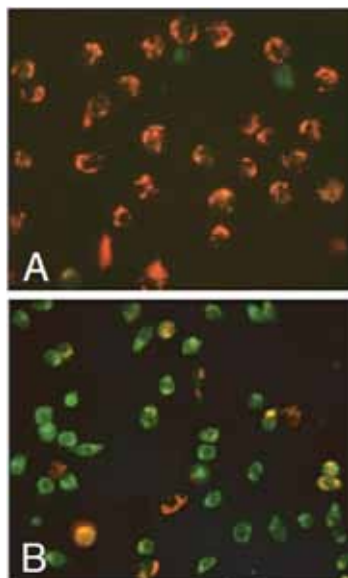
Cat. Num.	Product Name	Accession Number	Amino Acid Residue
H0000204-P01	AK2 (Human) Recombinant Protein (P01)	AAH09405	1a.a.-240a.a.
H0000204-Q01	AK2 (Human) Recombinant Protein (Q01)	NP_001616.1	1a.a.-96a.a.
H00008125-P01	ANP32A (Human) Recombinant Protein (P01)	AAH07200	1a.a.-250a.a.
H00081611-P01	ANP32E (Human) Recombinant Protein (P01)	NP_112182.1	1a.a.-268a.a.
H00000317-Q01	APAF1 (Human) Recombinant Protein (Q01)	NP_037361	1138a.a.-1237a.a.
H00080830-P01	APOL6 (Human) Recombinant Protein (P01)	NP_085144.1	1a.a.-343a.a.
H00080830-Q01	APOL6 (Human) Recombinant Protein (Q01)	NP_085144.1	1a.a.-76a.a.
H00000581-P01	BAX (Human) Recombinant Protein (P01)	AAH14175	1a.a.-193a.a.
H00000581-Q01	BAX (Human) Recombinant Protein (Q01)	NP_620116	1a.a.-100a.a.
H00000605-P01	BCL7A (Human) Recombinant Protein (P01)	NP_001019979.1	1a.a.-210a.a.
H00000605-Q01	BCL7A (Human) Recombinant Protein (Q01)	NP_066273.1	1a.a.-54a.a.
H00051651-P01	Bit1 (Human) Recombinant Protein (P01)	AAH06807	1a.a.-180a.a.
H00414899-P01	BLID (Human) Recombinant Protein (P01)	NP_001001786.1	1a.a.-108a.a.
H00414899-Q01	BRCC2 (Human) Recombinant Protein (Q01)	NP_001001786	2a.a.-108a.a.
H00025932-Q01	CLIC4 (Human) Recombinant Protein (Q01)	NP_039234	91a.a.-190a.a.
H00054205-P01	CYCS (Human) Recombinant Protein (P01)	AAH05299	1a.a.-106a.a.
H00054205-P02	CYCS (Human) Recombinant Protein (P02)	AAH08475	1a.a.-106a.a.
H00007818-P01	DAP3 (Human) Recombinant Protein (P01)	NP_004623	1a.a.-399a.a.
H00007818-Q01	DAP3 (Human) Recombinant Protein (Q01)	NP_004623	237a.a.-343a.a.
H00056616-Q01	DIABLO (Human) Recombinant Protein (Q01)	AAH11909	119a.a.-218a.a.
H00009093-P01	DNAJA3 (Human) Recombinant Protein (P01)	NP_005138.2	1a.a.-480a.a.
H00009093-Q01	DNAJA3 (Human) Recombinant Protein (Q01)	AAH12343	141a.a.-241a.a.
H00010059-P01	DNM1L (Human) Recombinant Protein (P01)	AAH24590.1	1a.a.-711a.a.

Mitochondrial Proteins

Cat. Num.	Product Name	Accession Number	Locus
H00023474-P01	ETHE1 (Human) Recombinant Protein (P01)	NP_055112.2	1a.a.-254a.a.
H00023474-Q01	ETHE1 (Human) Recombinant Protein (Q01)	NP_055112.2	155a.a.-254a.a.
H00051024-P01	FIS1 (Human) Recombinant Protein (P01)	AAH03540.1	1a.a.-153a.a.
H00051024-Q01	FIS1 (Human) Recombinant Protein (Q01)	NP_057152.1	1a.a.-100a.a.
H00003443-P01	IFNA6 (Human) Recombinant Protein (P01)	NP_066282.1	1a.a.-189a.a.
H00003443-Q01	IFNA6 (Human) Recombinant Protein (Q01)	NP_066282	100a.a.-189a.a.
H00009768-P01	KIAA0101 (Human) Recombinant Protein (P01)	AAH05832	1a.a.-112a.a.
H00009927-Q01	MFN2 (Human) Recombinant Protein (Q01)	NP_055689	661a.a.-757a.a.
H00051537-P01	MTP18 (Human) Recombinant Protein (P01)	AAH01608	1a.a.-167a.a.
H00004535-Q01	ND1 (Human) Recombinant Protein (Q01)	NP_542437	21a.a.-71a.a.
H00004538-Q01	ND4 (Human) Recombinant Protein (Q01)	NP_542437	406a.a.-459a.a.
H00055486-P01	PARL (Human) Recombinant Protein (P01)	NP_061092.3	1a.a.-379a.a.
H00005245-P01	PHB (Human) Recombinant Protein (P01)	AAH13401	1a.a.-273a.a.
H00057048-P01	PLSCR3 (Human) Recombinant Protein (P01)	AAH11735	1a.a.-296a.a.
H00057048-Q01	PLSCR3 (Human) Recombinant Protein (Q01)	NP_065093.2	74a.a.-165a.a.
H00087178-P01	PNPT1 (Human) Recombinant Protein (P01)	NP_149100.1	1a.a.-783a.a.
H00010105-P01	PPIF (Human) Recombinant Protein (P01)	NP_005720.1	1a.a.-207a.a.
H00010105-Q01	PPIF (Human) Recombinant Protein (Q01)	NP_005720	120a.a.-207a.a.
H00005052-P01	PRDX1 (Human) Recombinant Protein (P01)	AAH07063	1a.a.-200a.a.
H00009588-P01	PRDX6 (Human) Recombinant Protein (P01)	AAH35857.1	1a.a.-225a.a.
H00009588-P02	PRDX6 (Human) Recombinant Protein (P02)	AAH53550.1	1a.a.-224a.a.
H00027429-Q01	PRSS25 (Human) Recombinant Protein (Q01)	AAH00096	359a.a.-458a.a.
H00055486-Q01	PSARL (Human) Recombinant Protein (Q01)	NP_061092.3	2a.a.-100a.a.
H00005894-P01	RAF1 (Human) Recombinant Protein (P01)	NP_002871.1	1a.a.-648a.a.
H00005894-Q01	RAF1 (Human) Recombinant Protein (Q01)	AAH18119	1a.a.-130a.a.
H00010313-P01	RTN3 (Human) Recombinant Protein (P01)	AAH11394	1a.a.-237a.a.
H00010313-Q01	RTN3 (Human) Recombinant Protein (Q01)	NP_006045	84a.a.-169a.a.
H00005414-P01	SEPT4 (Human) Recombinant Protein (P01)	NP_004565.1	1a.a.-478a.a.
H00051100-P01	SH3GLB1 (Human) Recombinant Protein (P01)	AAH07455	1a.a.-366a.a.
H00006648-P01	SOD2 (Human) Recombinant Protein (P01)	AAH12423.1	1a.a.-223a.a.
H00006648-P02	SOD2 (Human) Recombinant Protein (P02)	AAH16934	1a.a.-141a.a.
H00006648-Q01	SOD2 (Human) Recombinant Protein (Q01)	NP_000627	1a.a.-110a.a.
H00007018-P01	TF (Human) Recombinant Protein (P01)	NP_001054.1	1a.a.-698a.a.
H00007018-Q01	TF (Human) Recombinant Protein (Q01)	AAH59367	551a.a.-650a.a.
H00007038-Q01	TG (Human) Recombinant Protein (Q01)	NP_003226	2659a.a.-2768a.a.
H00007038-Q02	TG (Human) Recombinant Protein (Q02)	NP_003226	2659a.a.-2768a.a.
H00010131-P01	TRAP1 (Human) Recombinant Protein (P01)	NP_057376.1	1a.a.-704a.a.
H00000706-P01	TSPO (Human) Recombinant Protein (P01)	AAH01110.1	1a.a.-170a.a.
H00007416-P01	VDAC1 (Human) Recombinant Protein (P01)	NP_003365.1	1a.a.-283a.a.
H00007416-Q01	VDAC1 (Human) Recombinant Protein (Q01)	AAH08482	1a.a.-100a.a.
H00007416-Q02	VDAC1 (Human) Recombinant Protein (Q02)	AAH08482.1	64a.a.-145a.a.
H00007416-Q03	VDAC1 (Human) Recombinant Protein (Q03)	AAH08482.1	156a.a.-276a.a.
H00007419-P01	VDAC3 (Human) Recombinant Protein (P01)	AAH56870	1a.a.-284a.a.

High Assay Sensitivity And User-friendly Kits

Abnova's kits ensure high precision, accuracy, sensitivity and specificity. Each kit has gone through rigorous validation and stability tests. We are continually expanding our kit portfolio to meet your research needs. Experience the ease of Abnova's kits now!



Product Name : JC-1 Mitochondrial Membrane Potential Assay Kit

Cat. Num. : KA1324

Product Description :

JC-1 Mitochondrial Membrane Potential Assay Kit is a fluorescence-based method for tracing the behavior of mitochondria.

Applications : Immunofluorescence

Effect of staurosporine on mitochondrial potential in Jurkat cells.

Jurkat cells were plated at a density of 5×10^4 cells/well. The next day, cells were treated with 2.5 $\mu\text{g}/\text{mL}$ of staurosporine or vehicle for two hours in a CO₂ incubator at 37°C.

JC-1 Staining Solution was then added to the wells and staining was visualized after a 15 minute incubation.

Panel A : untreated cells showing most of cells had strong J-aggregation (red).
Panel B : staurosporine treated cells showing a majority of cells stained green due to low $\Delta\Psi\text{m}$.

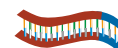


Kits for Mitochondrial Research

Cat. Num.	Product Name	Product Description	Suitable Sample	Reactivity
KA0777	Mitochondria/Cytosol Fractionation Kit	Mitochondria/Cytosol Fractionation Kit is used for isolation of a highly enriched mitochondrial fraction from cytosolic fraction of mammalian cells including both apoptotic and non-apoptotic cells.	Cell, Tissue	Mammals
KA0778	Mitochondrial Apoptosis Detection Kit	Mitochondrial Apoptosis Detection Kit is used for distinguishing between healthy and apoptotic cells by detecting the changes in the mitochondrial transmembrane potential.	Cell	Mammals
KA0895	Mitochondrial DNA Isolation Kit	Mitochondrial DNA Isolation Kit is used for isolating mtDNA from a variety of cells and tissues.	Cell, Tissue	Mammals
KA0945	Mitochondrial IgG ELISA Kit	Mitochondrial IgG ELISA Kit is used for the detection of IgG antibody to mitochondrial in human serum or plasma	Serum, Plasma	Human

Chimera RNA interference (chimera RNAi)

A New Powerful Tool for Mammalian Gene Silencing.



--- Nucleic Acids Research, 2008, 1-16

RNAi is a process by which small interfering RNA DNA chimera triggers the destruction of mRNA. The discovery work, design, and application of chimera RNAi have been pioneered by Professor Kaoru Saigo and Dr. Kumiko Ui-Tei at the University of Tokyo.

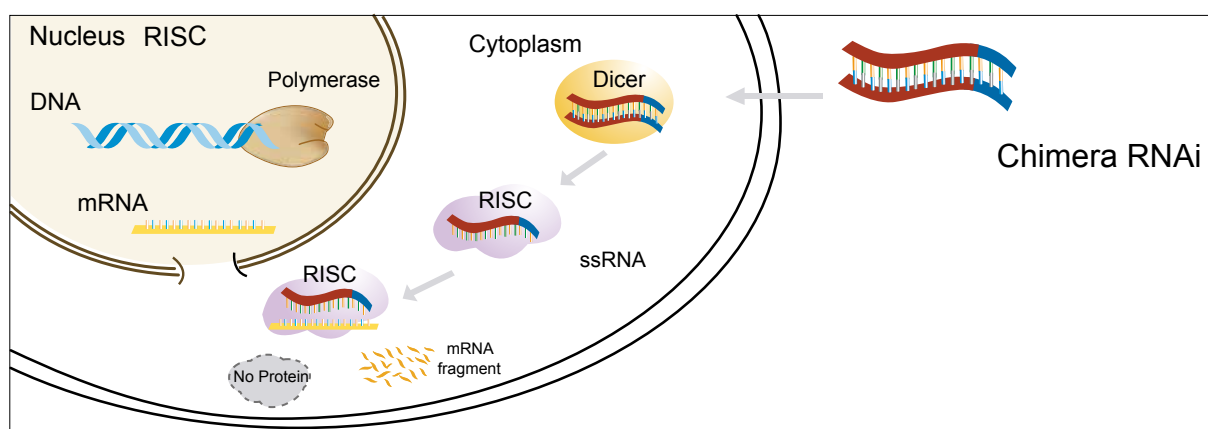
Advantages over conventional siRNAs:

Reliability: knock-down for over 10,000 human genes

Specificity: obviate off-target effects including microRNA-based influence

Efficacy: effective at low concentrations (0.5 nM to 5 nM)

Stability: streamline *in vitro* and *in vivo* assays while minimizing interferon induction



Chimera RNAi for Mitochondrial Research

Cat. Num.	Gene Name	Cat. Num.	Gene Name	Cat. Num.	Gene Name
H00000204-R04	AK2	H00056616-R01	DIABLO	H00005894-R03	RAF1
H00000204-R05	AK2	H00056616-R02	DIABLO	H00010313-R01	RTN3
H00000204-R06	AK2	H00056616-R03	DIABLO	H00010313-R02	RTN3
H00008125-R01	ANP32A	H00009093-R01	DNAJA3	H00010313-R03	RTN3
H00000317-R01	APAF1	H00010059-R01	DNM1L	H00010313-R04	RTN3
H00000317-R02	APAF1	H00010059-R02	DNM1L	H00005414-R01	SEPT4
H00000317-R03	APAF1	H00010059-R03	DNM1L	H00005414-R02	SEPT4
H00000317-R04	APAF1	H00027429-R01	HTRA2	H00005414-R03	SEPT4
H00000317-R05	APAF1	H00027429-R02	HTRA2	H00005414-R04	SEPT4
H00000581-R01	BAX	H00003443-R01	IFNA6	H00051100-R01	SH3GLB1
H00000581-R02	BAX	H00009768-R01	KIAA0101	H00006648-R01	SOD2
H00000581-R03	BAX	H00009768-R02	KIAA0101	H00006648-R02	SOD2
H00000581-R04	BAX	H00009927-R01	MFN2	H00006648-R03	SOD2
H00000581-R05	BAX	H00009927-R01V	MFN2	H00007018-R01	TF
H00051651-R01	BIT1	H00005245-R01	PHB	H00007038-R01	TG
H00051651-R02	BIT1	H00057048-R01	PLSCR3	H00007054-R01	TH
H00414899-R01	BRCC2	H00057048-R01V	PLSCR3	H00007054-R02	TH
H00000706-R03	BZRP	H00087178-R01	PNPT1	H00007054-R03	TH
H00000706-R04	BZRP	H00010105-R01	PPIF	H00010131-R02	TRAP1
H00548596-R02	CKMT1A	H00005052-R01	PRDX1	H00051024-R01	TTC11
H00025932-R01	CLIC4	H00005052-R02	PRDX1	H00007416-R01	VDAC1
H00054205-R01	CYCS	H00005052-R03	PRDX1	H00007419-R01	VDAC3
H00007818-R01	DAP3	H00009588-R01	PRDX6		
H00007818-R02	DAP3	H00005894-R01V	RAF1		

